



PRESENTED

BY

KI ZAARA

**“A STRONG EFFORT FOR A HEALTHY INDIA
AND A PROSPEROUS INDIA ”**

“ GOOD HEALTH, GOOD WEALTH & GOOD LIFE ”





KIZAARA

A DIFFERENT THINKING



“KIZAARA” THE BEST SOLUTION OF AYURVEDA

“ A STRONG EFFORT FOR A HEALTHY INDIA ”

KIZAARA INTERNATIONAL RETAIL PVT. LTD.

WEBSITE:- WWW.KIZAARA.COM



KIZAARA
A DIFFERENT THINKING



KIZAARA
A DIFFERENT THINKING

WELCOME

MY DEAR COLLEAGUES,

MANY MANY CONGRATULATIONS AND BEST WISHES FROM THE BOTTOM OF MY HEART TO ALL THOSE WHO ARE JOINING OR GOING TO JOIN THE KIZAARA FRIENDS, WITH THE BLESSINGS OF ALL OF YOU, I STARTED WORKING IN THIS INDUSTRY (DIRECT SELLING) FROM 19TH APRIL 2002 AND ALONG WITH WORKING, I ALSO STUDIED DEEPLY HOW PEOPLE CAN SELL THEIR PRODUCTS IN THE RIGHT WAY WITH HONESTY AND INTEGRITY IN A SHORT TIME AND CAN MOVE FORWARD SUCCESSFULLY.

THE INDUSTRY YOU ARE ASSOCIATED OR ARE GOING TO JOIN (DIRECT SELLING) IS THE BIGGEST INDUSTRY IN THE WORLD. IN FRONT OF THIS INDUSTRY, NO INDUSTRY IN THE WORLD CAN COMPETE WITH IT. THIS INDUSTRY HAS BECOME THE BIGGEST MEDIUM TO MAKE PEOPLE MILLIONAIRES AND BILLIONAIRES ALONG WITH GIVING RESPECT AND A NEW IDENTITY TO THE PEOPLE IN THE WORLD. AND DAY BY DAY EVERY SINGLE CLASS OF PEOPLE ARE BECOMING MILLIONAIRES AND BILLIONAIRES THROUGH THIS INDUSTRY.

IN TODAY'S TIME THE WELLNESS, NUTRITION AND AYURVEDA INDUSTRY IS GROWING THE FASTEST. AND THERE ARE ALSO COUNTLESS POSSIBILITIES FOR RAPID FURTHER DEVELOPMENT IN THIS FIELD. MANY BUSINESS EXPERTS AGREE. THAT IN THE COMING TIME, BIG CAPITALISTS WILL EMERGE VERY FAST IN THE FIELD OF WELLNESS, NUTRITION AND AYURVEDA.

TODAY'S NEED AND TIME OF THE DAY, YOUR VERY OWN KIZAARA IN THE FIELD OF WELLNESS, NUTRITION AND AYURVEDA HAS COME UP WITH AMAZING AND BEST RESULT GIVING PRODUCTS. LET US ALL TAKE ADVANTAGE OF KIZAARA'S AYURVEDIC PRODUCTS AND PASS ON KIZAARA'S AYURVEDIC PRODUCTS TO ALL OUR FRIENDS. LET US ALL TOGETHER BUILD A NEW INDIA, HEALTHY INDIA AND PROSPEROUS INDIA THROUGH KIZAARA'S AYURVEDIC PRODUCTS AND THIS INDUSTRY (DIRECT SELLING). AND CREATE A NEW HISTORY IN INDIA. WISHING YOU ALL THE VERY BEST FOR YOUR BRIGHT FUTURE.



SANTOSH CHAHAR

I WANT TO ASK YOU A QUESTION..?

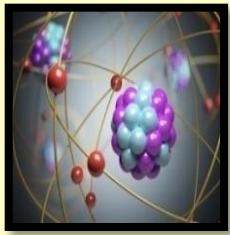
**WHAT WOULD ANY INTELLIGENT PERSON
WANT TO CHOOSE FROM THESE TWO..?**

1. DISEASE

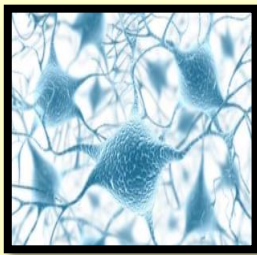
2. TREATMENT

DISEASE

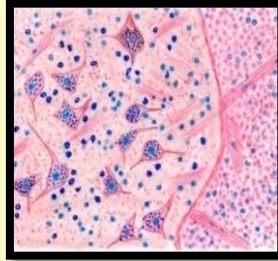
SCIENTIFICALLY DESIGNED HUMAN BODY



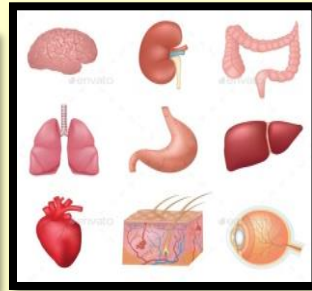
ATOM



CELL



TISSUE

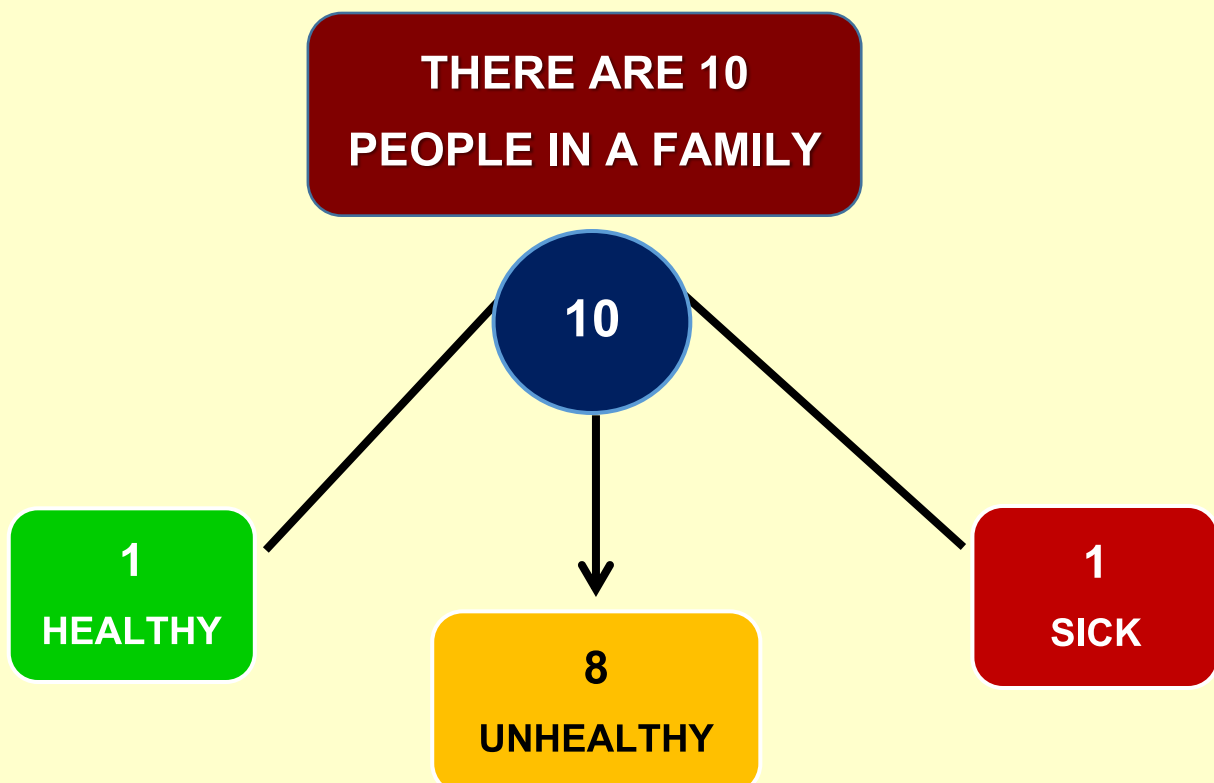


ORGAN

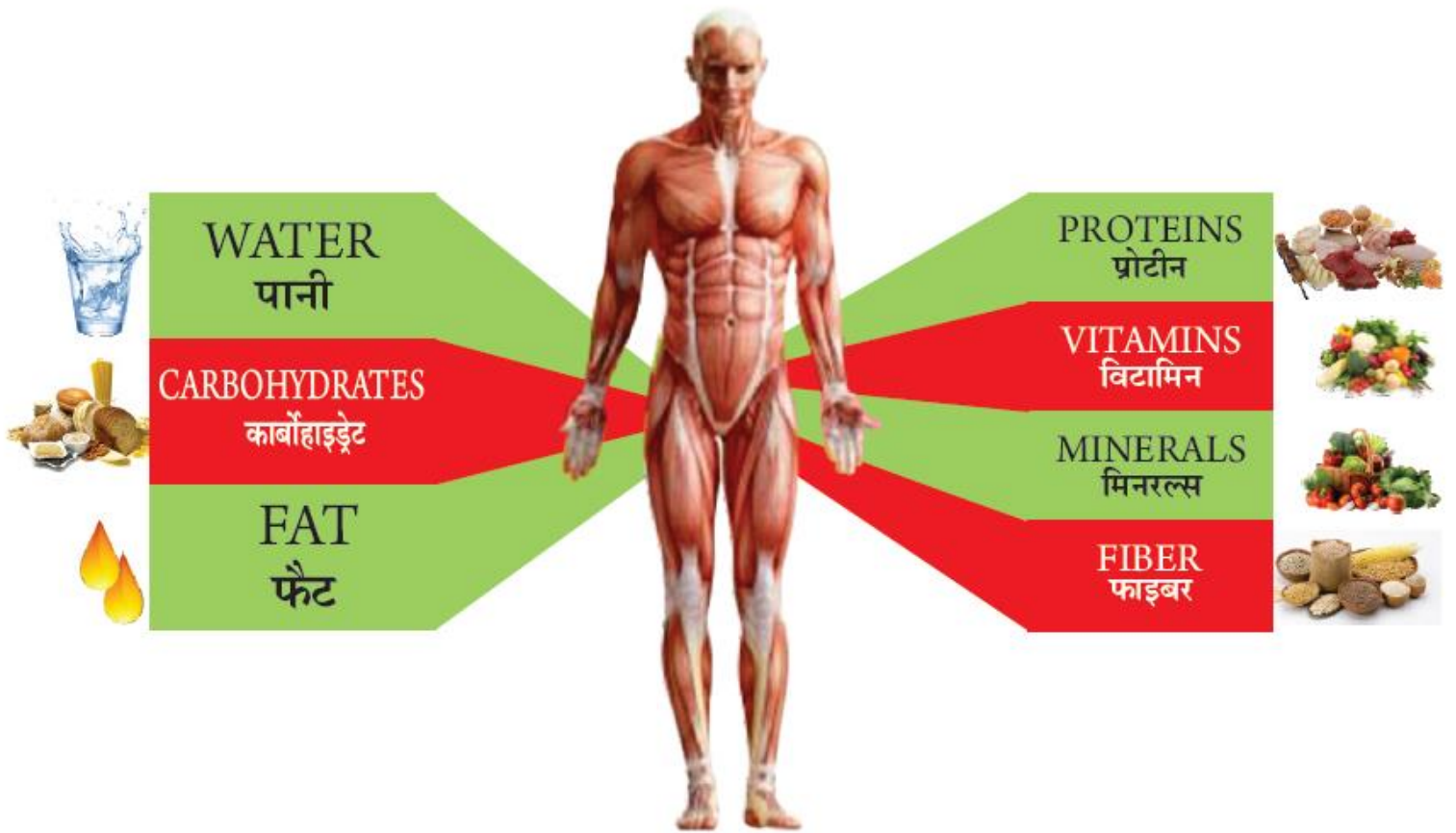


BODY

ARE YOU REALLY HEALTHY..?



7 ELEMENTS OF BODY



SEVEN NUTRIENTS SUCH AS WATER, CARBOHYDRATE, FAT, PROTEIN AS WELL AS VITAMINS, MINERALS, AND FIBER ARE NEEDED TO KEEP OUR BODY'S HEALTH RIGHT, BUT MANY OF US ASSUME ADEQUATE AMOUNTS OF WATER, CARBOHYDRATES AND FATS.

BUT MANY OF US CONSUME PROTEIN, VITAMINS, AND FIBER ALMOST UNACCOUNTED FOR. OUR LEADING HEALTH ORGANIZATIONS SUCH AS WHO (WORLD HEALTH ORGANIZATION), ICMR (INDIAN COUNCIL OF MEDICAL RESEARCH) AND NIN (NATIONAL INSTITUTE OF NUTRITION) RECOMMEND INCORPORATING THESE NUTRIENTS IN ABUNDANT FOOD DAILY FOR GOOD HEALTH.

FROM LACK OF 7 ELEMENTS OF THE BODY..?

WHAT HAPPENS WHEN THE BALANCE OF WATER, CARBOHYDRATES, FATS, PROTEINS, VITAMINS, MINERALS AND FIBER IN THE BODY DETERIORATES.

FOLLOWING ARE THE RELATED DISEASES:-

DIABETES, BLOOD PRESSURE, DIGESTIVE SYSTEM DISORDER, NERVOUS SYSTEM DISORDER, HEART DISEASE, ARTHRITIS (BONE & JOINT DISORDER), BLINDNESS (EYE PROBLEM), BODY INFECTION (BODY ACHES), LOSS OF MEMORY, HAIR LOSS ETC.

A SIGNS FOR INDIANS

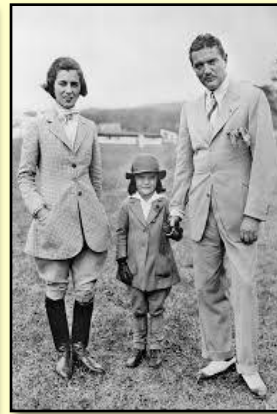
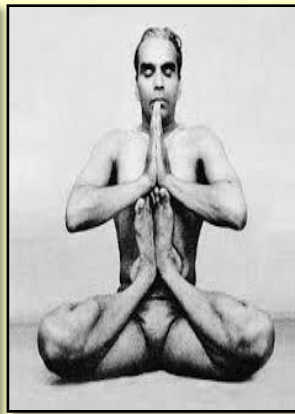
- ❖ **INDIA IS CALLED THE CAPITAL OF DIABETES IN THE WORLD.**
- ❖ **INDIA IS CALLED THE CAPITAL OF CANCER IN THE WORLD.**
- ❖ **67% OF INDIANS DIE OF HEART DISEASE.**
- ❖ **85% OF INDIANS ARE AFFECTED BY DIGESTIVE SYSTEM DISEASE.**
- ❖ **1 IN 6 INDIANS ARE AFFECTED BY MENTAL DISORDERS.**

DIFFERENCE BETWEEN PAST LIFE AND TODAY'S LIFE

EARLIER TIME

FOR A LONG TIME LIVED ALIVE

DEATH WAS AFTER A LONG TIME



TODAY'S TIME

FOR A SHORT TIME SURVIVE

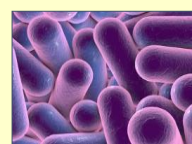
DEATH IS EARLY



PAST DISEASES

MALARIA	COLD OR ASPHYXIA
DIPHTHERIA	SWELLING CLOSURE DISEASE DUE TO CLOSURE OF THROAT MEMBRANE
SMALL POX	CHICKENPOX COLD DISEASE
PLAGUE	PANDEMIC GODDESS WRATH
CHICKEN POX	CHICKEN POX
CHOLERA	CHOLERA
TUBERCULOSIS	TUBERCULOSIS
WHOOPING COUGH	COOKER COUGH OR WHOOPING COUGH

! MICROBE WAS THE CAUSE OF EARLIER DISEASES !



PRESENT DISEASES

OSTEOPOROSIS	OSTEOPOROSIS
ASTHMA	ASTHMA DISEASE
DIABETES	DIABETES
STROKE	SHOCKED
CANCER	CANCER
HYPERTENSION	HIGH BLOOD PRESSURE
CARDIO VASCULAR DISEASE	HEART DISEASE
ARTHRITIS	JOINT INFLAMMATION / ARTHRITIS
OBESITY	OBESITY
ALZHEIMERS	MENTAL ILLNESS / AMNESIA

CAUSE OF PRESENT DISEASES: TODAY'S LIFESTYLE. NOW A DAYS, EATING AND DRINKING, SLEEPING AND WAKING NOT AT THE RIGHT TIME ARE THE MAIN REASONS IN PEOPLE'S LIFESTYLE.

WHAT WENT WRONG WITH ALL OF US..?

PEOPLE WHO USED TO EAT BEFORE. HE
ACTED LIKE A MEDICINE. BUT WHATEVER
FOOD WE ARE EATING TODAY.
HE IS ACTING LIKE A SLOW POISON.

WHAT DOES OUR BODY WANT ?

WHAT ARE WE GIVING TO OUR BODY ?



- ✓ VITAMINS
- ✓ NUTRIENTS
- ✓ MINERALS
- ✓ CARBOHYD
RATE
- ✓ FIBER
- ✓ FAT
- ✓ PROTEIN
- ✓ AMINO
ACIDS
- ✓ ENZYME
- ✓ HERB
- ✓ WATER



- ✓ SOPHISTICATED
PRODUCT
- ✓ MEAT
- ✓ ANIMAL PRODUCTS
- ✓ BOILED
VEGETABLES FRUITS
- ✓ SALT
- ✓ SUGAR
- ✓ CHOLESTEROL
- ✓ CAFFEINE,
ALCOHOL
- ✓ MEDICINE
- ✓ FOOD MIXED WITH
PESTICIDES

COSMETIC CHEMICALS IN FAST FOOD

DO YOU KNOW, YOUR FAVORITE FOOD (**FAST FOOD**)
WHY DO FLIES AND ANTS NOT COME NEAR ?



SODIUM STEAROYL LACTYLATE
IT IS FOUND IN SHAMPOOS,
SOAPS AND CONDITIONERS. AND
IT IS USED IN BREAD.



DISODIUM PHOSPHATE
IT IS FOUND IN SOOT AND
MOUTHWASH. AND IT IS USED IN
FOODS.



CALCIUM DISODIUM EDTA
IT IS FOUND IN SKIN PRODUCTS AND
CONDITIONERS. AND IT IS USED TO
ENHANCE TASTE IN FAST FOOD,
SAUCES, DIPS DECORATIONS.



PROPYLENE GLYCOL
IT IS FOUND IN SHAMPOO,
MOUTHWASH, HAND SANITIZER.
MOST OF TODAY'S FOOD AND
BEVERAGES ARE USED TO
ENHANCE FLAVOR.

BENZOYL PEROXIDE
IT IS A BANNED ACTIVE
SUBSTANCE IN CHINA. IT IS USED
FOR ACNE CREAM. MOSTLY IT IS
FOUND IN FAST FOOD.



AMMONIUM GLYCYRRHIZIN
IT IS FOUND IN FACIAL MASK
PRODUCTS. AND IT IS USED TO
ENHANCE TASTE.



CHEMICALS IN ICE CREAM

WHAT ARE THESE CHEMICALS IN ICE CREAM..?



DIETHYL GLYCOL:- AN INEXPENSIVE CHEMICAL USED AS EMULSIFIER INSTEAD OF EGG IS THE SAME CHEMICAL USED IN ANTIFREEZE AND PAINT REMOVERS.

PIMPERNEL:- USED IN PLACE OF VANILLA, THIS CHEMICAL IS USED TO KILL LICE.

ALDEHYDE C-17:- CHERRIES ARE USED TO FLAVOR ICE CREAM. IT IS AN UNUSABLE LIQUID. WHICH IS ALSO USED IN ANILINE DYE PLASTICS.



ETHYL ACETATE:- ICE CREAM IS USED TO GIVE A PINEAPPLE FLAVOR. DEANER IS USED FOR BOTH LEATHER AND TEXTILES. ITS EFFECTS HAVE BEEN SHOWN TO CAUSE CHRONIC LUNG, LIVER AND HEART DAMAGE.

BUTYRALDIZERS:- USED IN NUT-FLAVORED ICE CREAM, IT IS ONE OF THE INGREDIENTS OF RUBBER CEMENT.

AMYL ACETATE:- IT IS USED TO FLAVOR BANANAS. IT IS ALSO USED AS AN OIL ADDITIVE IN PAINTS.

BENZYL ACETATE:- IT IS USED FOR STRAWBERRY FLAVOR. IT IS A NITRATE SOLVENT SUBSTANCE.



SUPPLY IS LOW ACCORDING TO DEMAND INSTEAD OF GROWING, BEING BUILT.

OUR BODY IS NOT GETTING THE RIGHT NUTRIENTS FROM TODAY'S FOOD.



GENETICALLY MODIFIED CROPS

- ✓ TOXIC PESTICIDES FROM GM FOOD CROPS FOUND IN SOIL WITH LOW NUTRIENT LEVELS IN UNBORN BABIES. TOXIC PESTICIDES THAT ARE ADDED TO GENETICALLY MODIFIED FOOD CROPS, RECORDED IN THE BLOOD OF PREGNANT WOMEN AND THEIR UNBORN BABIES. (TIMES OF INDIA)



CHANGE IN COOKING METHOD

- ✓ NUTRIENTS, INCLUDING VEGETABLE LIQUIDS, ARE ALSO DESTROYED BY COOKING FOR LONG PERIODS OR AT HIGH TEMPERATURES.

STORAGE AND TRANSPORT

- ✓ FRUITS AND VEGETABLES TRAVEL THOUSANDS OF MILES TO REACH THE SUPERMARKET.
- ✓ FOOD, WHICH WE CONSIDER TO BE FRESH AND NUTRITIOUS, OFTEN HAS THE OPPOSITE. THAT IS, MOST OF THEM ARE STORED.
- ✓ EX: FRUITS AND VEGETABLES LOSE BETWEEN 50% AND 90% OF THEIR VITAMIN C WITHIN 24 HOURS AT THE LOWEST ROOM TEMPERATURE IN THE STORE.



TOXIN MIXTURE IN THE BODY (PESTICIDE)

WE ARE ALSO EATING CHEMICALS IN FOOD.



THINK IF THIS **TOXIC PESTICIDE IS SO HARMFUL** FOR BREATHING.

SO WOULDN'T IT BE HARMFUL TO OUR FOOD?

CERTAINLY WILL BE VERY HARMFUL.

EACH YEAR BY THE WORLD HEALTH ORGANIZATION
(WHO) ESTIMATES 10.7 MILLION CASES OF
TOXIC PESTICIDES OCCUR AND IT CAUSES 3,70,000
DEATHS EVERY YEAR.

TOXIC SUBSTANCES IN THE ENVIRONMENT



AIR POLLUTION

AIR POLLUTION IS CONSIDERED THE CAUSE OF 1 IN 10 DEATHS DUE TO LUNG CANCER. ENVIRONMENTAL POLLUTION THREATENS HUMAN HEALTH. AIR POLLUTION IN CITIES CAUSES UNDER-LIFE FOR THE CITY DWELLERS.



WATER POLLUTION

STUDIES SHOW THAT THE ALARMING RATE OF INCREASE IN WATER POLLUTION AFFECTS MILLIONS OF PEOPLE. MORE THAN 780 MILLION PEOPLE DO NOT HAVE ACCESS TO CLEAN WATER.



RADIATION

RADIATION DANGEROUSLY ELIMINATES THE WATER OF LIVING CELLS. WHICH ATTACK THE ESSENTIAL MOLECULES OF OUR BODY LIKE DNA AND PROTEINS.

SODA, POP, CARBONATED BEVERAGES, SWEET BEVERAGES

IS THIS YOUR FAVOURITE DRINK...?

1. PHOSPHORIC ACID

EROSION OF BONES AND TEETH, LEADING TO OSTEOPOROSIS, DISRUPTS DIGESTION.

2. ALARMING SUGAR CONTENT

PROCEEDING TO DIABETES, WEIGHT GAIN, INCREASED BP, HIGH CHOLESTEROL, HEART DISEASE, PREMATURE AGING ETC.

3. ASPARTAME

AN ARTIFICIAL SWEETENER, HIGHLY CARCINOGENIC, BRAIN TUMOR, BIRTH DEFECT, EPILEPSY, DIABETES ETC.

4. CAFFEINE

INSOMNIA, HIGH BP, IRREGULAR HEARTBEAT, HIGH CHOLESTEROL, CANCER ETC.

5. SODIUM BENZOATE

COMMON PRESERVATIVES CAUSE SEVERE CELL DAMAGE.

6. TAP WATER

IT CONTAINS CHEMICALS LIKE CHLORINE, LEAD, CADMIUM, ORGANIC POLLUTANTS ETC.



**DO YOU KNOW ?
IN YOUR FAVORITE
DRINK THE SUGAR IS
EQUIVALENT TO 16
PACKETS OF SUGAR.**

**FDA ALSO REPORTED IN HUMAN (ASPARTAME)
CASE OF ADVERSE REACTIONS AND
LIFE-HARMING IS INCLUDED IN THE
FOLLOWING SITUATIONS.**



HEART DISEASE



B.P. PROBLEM



**WEIGHT
GAINING**

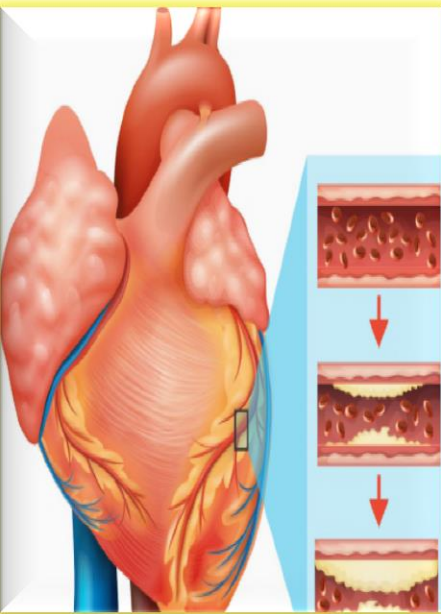


DIABETES



**EXPLOITATION
OF BONES AND
TEETH**

- ✓ **MIGRAINE**
- ✓ **CHANGE OF VISION**
- ✓ **NAUSEA AND VOMITING**
- ✓ **INSOMNIA / SLEEPING PROBLEM**
- ✓ **STOMACH AND JOINT PAIN**
- ✓ **CHANGE IN HEART RATE**
- ✓ **TENSION**
- ✓ **LOSS OF MEMORY**
- ✓ **BRAIN CANCER**



CARDIO VASCULAR DISEASES

INDIA ACCOUNTS FOR 60% OF HEART-RELATED DEATHS IN THE WORLD.

ACCORDING TO INDIA'S WELL-KNOWN RADIOLOGIST HARSH MAHAJAN, BY 2020, THERE ARE OVER 4.77 MILLION DEATHS FROM CARDIO VASCULAR DISEASE (CVD) IN INDIA AND 2.58 MILLION DEATHS FROM CORONARY HEART DISEASE (CHD).



DIABETES PROBLEM

1 IN 7 IN INDIA IS A DIABETIC PATIENT.

INDIA HAS THE HIGHEST NUMBER OF DIABETES PATIENTS IN THE WORLD. DIABETES IS A MAJOR HEALTH PROBLEM IN INDIA. INDIA IS CALLED THE DIABETES CAPITAL OF THE WORLD.



ARTHRITIS PROBLEM

INDIA HAS MORE PEOPLE WITH ARTHRITIS THAN EUROPE AND NORTH AMERICA COMBINED.



OBESITY PROBLEM

IN THE COMING 10 YEARS, 50% OF THE INDIAN POPULATION WILL SUFFER FROM OBESITY.



HYPERTENSION PROBLEM

35% OF SCHOOL CHILDREN IN URBAN AREAS SUFFER FROM HYPERTENSION.



CANCER PROBLEM

CANCER IS THE THIRD LARGEST KILLER IN INDIA, 4 LAKHS DIE FROM CANCER EVERY YEAR IN INDIA. THE MINISTRY OF HEALTH FIGURES SHOW A CASE OF 25 LAKHS CANCER PATIENTS IN THE COUNTRY AT ALL TIMES.



OSTEOPOROSIS

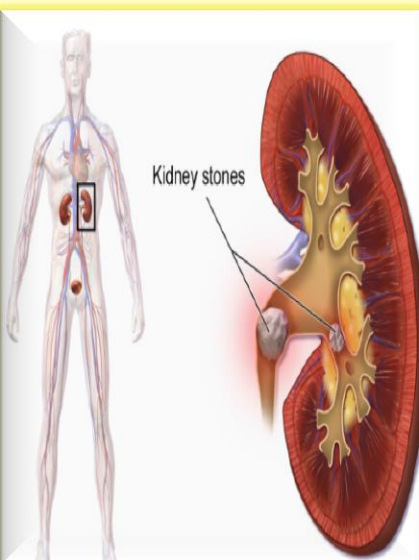
THERE WILL BE AN INCREASE OF 250 CRORES IN THE ESTIMATED CASE OF BONE DISORDER. AS OF 2015, BASED ON THE 2001 CENSUS, APPROXIMATELY 16.3 MILLION INDIANS AT THE AGE OF 50 ABOVE ALL, HAVE REPORTED CASES OF BONE-BORNE DISORDER.

(DEPARTMENT OF ENDOCRINOLOGY AND DIABETES, NEW DELHI)



ALLERGY PROBLEM

CURRENTLY, ABOUT 20 TO 30 PERCENT OF INDIA'S POPULATION SUFFERS FROM ONE OR MORE ALLERGIC DISEASES AND THE NUMBER IS INCREASING. A REPORT QUOTED WAO CHAIRPERSON DR. RUBY PAVANKAR AS SAYING THAT THIS GROWTH HAS BEEN PARTICULARLY DIFFICULT FOR CHILDREN. "THE WAY THEY ARE HAPPENING, WE BELIEVE THAT BY 2050, ABOUT 50 PERCENT OF CHILDREN WILL HAVE SOME KIND OF ALLERGY," SAYS PAWANKAR.



STONE PROBLEM

ONE IN EVERY 20 PEOPLE DEVELOPS KIDNEY STONES AT SOME POINT IN THEIR LIFE. KIDNEY STONES ARE FORMED WHEN THERE IS A DECREASE IN URINE VOLUME OR EXCESS OF STONE-FORMING SUBSTANCES IN THE URINE.



GYNAECOLOGICAL PROBLEMS

ACCORDING TO THE TIMES OF INDIA:-

RE-GENERATION INCIDENT AT THE AGE OF 20.

OCCURRENCE OF MENSTRUATION AT THE AGE OF 5 IN BENGALURU.

ACCORDING TO HETAL VYAS:-

20 YEARS OF NEW URBAN EVENT RE-GENERATION.

ACCORDING TO JENNY HOPE 7 JULY

2011:- 1 IN 20 WOMEN IS SUFFERING FROM RE-GENERATION BEFORE THE AGE OF 40.



LIVER PROBLEM

ONE OUT OF EVERY FIVE PEOPLE IN THE STATE HAS SOME PROBLEM. AN ESTIMATED 30,000 PEOPLE DIE EACH YEAR FROM TERMINAL LIVER DISEASE AND LIVER CANCER, ESTIMATED BY LIVER COMPLICATIONS. LIVER DISEASES ARE ONE OF THE TOP 10 CAUSES OF DEATH. PEOPLE OF ALL AGE GROUPS ARE AFFECTED BY THIS PROBLEM IN INDIA. A DATA DOCTOR WANTS TO THROW LIGHT ON WORLD LIVER DAY.

TREATMENT

BY WHAT METHOD DO WE TREAT..?



ALLOPATHIC



HOMEOPATHY



AYURVEDIC

ALLOPATHIC

ALLOPATHIC IS AN IMMEDIATE BENEFICIAL TREATMENT. WE TRY TO CURE A DISEASE BY ALLOPATHIC TREATMENT. BUT ALLOPATHIC TREATMENT GIVES OTHER DISEASE FOR FREE. AND IN THE PROCESS OF CURING THE SECOND, THE THIRD DISEASE, THAT IS WE CAN SAY THIS. THAT ALLOPATHIC TREATMENT HAS MORE SIDE EFFECTS. AND WITH ALLOPATHIC TREATMENT, OUR BODY ALSO SUFFERS A LOT OF LOSS WITH MONEY.

HOMEOPATHY

SECOND, WE DO HOMEOPATHIC TREATMENT. HOMEOPATHIC TREATMENT BENEFITS. BUT IT TAKES A LONG TIME. AND A LOT OF MONEY TOO. THE BIGGEST THING IS THIS THAT WE ALL HAVE A SHORTAGE OF TIME NOWADAYS. PERHAPS THIS IS WHY WE ALL CHOOSE IMMEDIATE TREATMENT. AND THAT TREATMENT IS ALLOPATHIC. WE DO NOT EVEN THINK ABOUT THE SIDE EFFECTS CAUSED BY ALLOPATHIC TREATMENT.

THE MEANING OF THE NAME 'AYURVEDA'. (AYUR+VEDA= AYURVEDA THE WORD 'VEDA' MEANS POWER, PROFIT, SPEED, THOUGHT, ATTAINMENT AND KNOWLEDGE. KNOWLEDGE RELATED TO LIFE, IE THE BOOK IN WHICH - INTEREST AGE (COMPATIBLE WITH LIFE), LOSS OF LIFE, AGE OF HAPPINESS (HEALTHY LIFE), AND AGE OF SORROW (DISEASE STATE) THEIR DESCRIPTION IS CALLED AYURVEDA. AND THE CREATION OF AYURVEDA IS BELIEVED TO BE AROUND 3,000 TO 50,000 YEARS AGO, IE ACCORDING TO CHRISTIAN BELIEF, AROUND THE ORIGIN OF CREATION. AND RIGVEDA, SAMAVEDA, YAJURVEDA AND ATHARVAVEDA-AMONG THESE FOUR VEDAS, ATHARVAVEDA IS CONSIDERED THE SOUL OF AYURVEDA.

AYURVEDA IS ONE OF THE OLDEST MEDICAL SYSTEMS IN THE WORLD. IT IS A MIXTURE OF SCIENCE, ART AND PHILOSOPHY. IN AYURVEDA, THE PATIENT'S DISEASE HAS BEEN CONSIDERED TO BE THE CAUSE OF IMBALANCE OF THREE FLAWS (TRIDOSHA = VATA, PITTA, KAPHA). AYURVEDIC TREATMENT IS THE CHEAPEST, BEST AND MOST EFFECTIVE TREATMENT. THE DISEASE FOR WHICH AYURVEDIC TREATMENT IS BEING DONE. HE CORRECTS IT FROM THE ROOT. TOGETHER, IT ELIMINATES EVEN MORE MINOR PROBLEMS FROM THE ROOT. THE PRIME MINISTER OF OUR COUNTRY SHRI NARENDRA MODI HAS ALSO CAMPAIGNED TO PROMOTE AYURVEDA SYSTEM.

ACCORDING TO THE WORLD HEALTH ORGANIZATION (WHO), THE BODY WHOSE IMMUNITY (DEFENSE MECHANISM OR IMMUNE SYSTEM CAPACITY) IS GOOD. THAT BODY ITSELF IS CAPABLE OF FIGHTING ANY VIRUS. ACCORDING TO AYURVEDIC, AYURVEDIC PRODUCTS PROVE TO BE VERY EFFECTIVE FOR INCREASING THE IMMUNITY OF THE BODY.

HOW TO GET THE SUPREME / BEST HEALTH BACK..?

KIZAARA
A DIFFERENT THINKING



DO YOU WANT THE BEST / GOOD HEALTH..?

**THE ONLY ANSWER IS “ KIZAARA'S BEST
AYURVEDA PRODUCTS ” AYURVEDA PRODUCTS
COMPLEMENT OUR NUTRITION AND MAINTAIN
GOOD HEALTH.**



KIZAARA

A DIFFERENT THINKING



“KIZAARA” THE BEST SOLUTION OF AYURVEDA

**“ A STRONG EFFORT FOR A HEALTHY INDIA AND A
PROSPEROUS INDIA ”**

KIZAARA INTERNATIONAL RETAIL PVT. LTD.

WEBSITE:- WWW.KIZAARA.COM



A/C NAME = KIZAARA INTERNATIONAL RETAIL PRIVATE LIMITED

BANK NAME = IDFC FIRST BANK, A/C NUMBER = 10043455761

IFS CODE = IDFB0042281, BRANCH CODE = 042281, A/C TYPE = CURRENT

BRANCH NAME=SANTA MADHAV SANKUL MICO CIRCLE

BANK NAME = ICICI BANK, A/C NUMBER = 018205006070

IFS CODE = ICIC0000182, BRANCH CODE = 0182, A/C TYPE = CURRENT

BRANCH NAME=ICICI BANK NASHIK ROAD



BANK = IDFC FIRST BANK,

VPA ID =

Deepmalachahar5@idfcbank

BANK = ICICI BANK LTD.

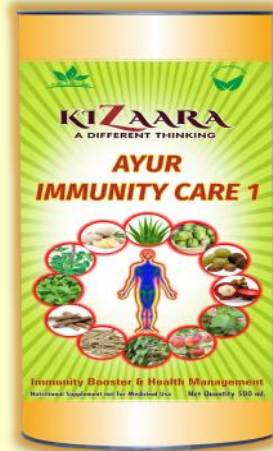
VPA ID = kizaara@icici



**IF YOU WANT TO TAKE
ADVANTAGE OF AND BENEFIT
FROM THE “ BEST OF KIZAARA”
AYURVEDIC PRODUCTS FOR
THOSE WHO KNOW MORE FOR
YOUR FAMILY.**

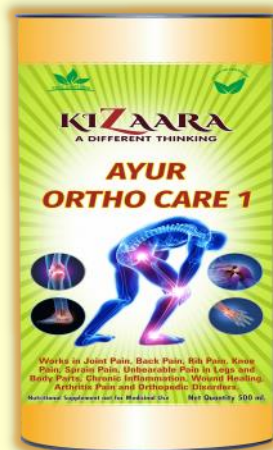
SO LET'S KNOW

**“ BEST OF KIZAARA”
MORE INFORMATION ON
AYURVEDIC PRODUCTS.**



AYUR IMMUNITY CARE 1

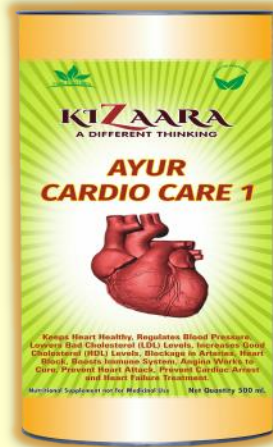
AYUR IMMUNITY CARE 1 VERY HELPFUL FOR THE COMPLETE DEVELOPMENT OF THE BODY. AND IMPROVES THE IMMUNE SYSTEM TO FIGHT ALL DISEASES. **AYUR IMMUNITY CARE 1** IS A NORMAL AND VERY GOOD ENERGY BOOSTER. **AYUR IMMUNITY CARE 1** HELPS A LOT IN THE DEVELOPMENT OF ALL BODY PARTS. AND MAKES THEM HEALTHY.



AYUR ORTHO CARE 1

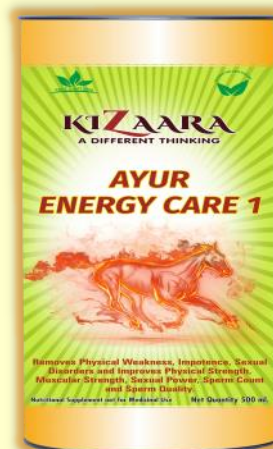
AYUR ORTHO CARE 1 CURES JOINT PAIN, BACK PAIN, KNEE PAIN, KNEE PROBLEM, SPRAIN, DISLOCATED SHOULDER BONE AND UNBEARABLE PAIN IN BODY PARTS. ORTHOPEDIC DISORDERS ARE LIKE ILLNESS, INJURY OR DISEASES. WHICH CAUSES UNBEARABLE PAIN IN THE LEGS AND BODY PARTS, GAP BETWEEN THE BONES. THESE ARE JUST A FEW OF THE KNOWN ORTHOPEDIC DISORDERS. **AYUR ORTHO CARE 1** IS A VERY GOOD TREATMENT FOR ORTHOPEDIC DISORDERS. **AYUR ORTHO CARE 1** CURES ALL ORTHO DISORDERS AND PAIN.

AYUR CARDIO CARE 1



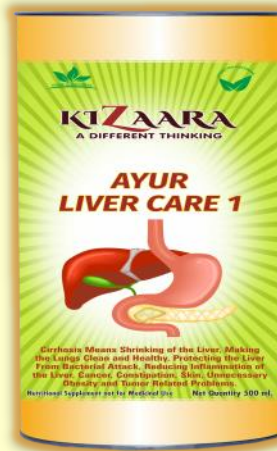
AYUR CARDIO CARE 1 IS USEFUL FOR HEALTHY HEART. **AYUR CARDIO CARE 1** HELPS A LOT IN FIGHTING AND OVERCOMING VARIOUS HEART DISEASES. CURES HEART DISEASES. NATURALLY MAINTAINS BLOOD PRESSURE. CURES HEART BLOCKAGES AND KEEPS HEART HEALTHY.

AYUR ENERGY CARE 1

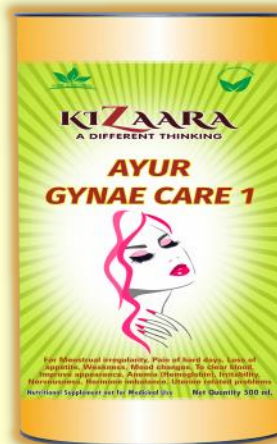


AYUR ENERGY CARE 1 MUSCLES STRENGTH, SEX POWER, ELIMINATES DREAMING AND PROVIDES ENERGY IN THE BODY. **AYUR ENERGY CARE 1** REDUCES SEX DISORDERS. AND IT ALSO INCREASES SEX POWER. **AYUR ENERGY CARE 1** ENHANCES SPERM COUNT AND SPERM QUALITY. **AYUR ENERGY CARE 1** INCREASES THE STRENGTH AND STAMINA OF THE BODY. PHYSICAL WEAKNESS IS A MAJOR CAUSE OF FATIGUE. DUE TO WEAKNESS, IT IS DIFFICULT TO DO EVERYDAY ACTIVITIES. AND SOON YOU GET TIRED. WEAKNESS COMES IN THE BODY DUE TO ILLNESS OR OTHER REASONS. AND THERE IS ALWAYS FATIGUE. APART FROM FATIGUE DUE TO PHYSICAL WEAKNESS, SYMPTOMS LIKE HEADACHE, JOINT AND MUSCLE PAIN, LOSS OF INTEREST IN WORK CAN OCCUR.

AYUR LIVER CARE 1



AYUR LIVER CARE 1 CAN BE USED TO CURE LIVER DISEASES. THE LIVER IS A FOOTBALL-SHAPED ORGAN. LIVER DISEASE CAN BE GENETIC. OR DUE TO MANY FACTORS THAT DAMAGE THE LIVER, SUCH AS VIRUSES AND ALCOHOL USE ALSO CAUSE DISEASE. OBESITY IS ALSO ASSOCIATED WITH LIVER DAMAGE. OVER TIME, LIVER DAMAGE LEADS TO CIRRHOSIS. IN WHICH THE LIVER GRADUALLY STARTS DETERIORATING. AND THE LIVER DOES NOT FUNCTION NORMALLY. AND IN THIS PROCESS, SCAR MARKS ARE FORMED ON THE SCAR TISSUES. THIS SCAR TISSUE DESTROYS HEALTHY TISSUE. DUE TO WHICH THE FLOW OF BLOOD IN THE LIVER IS REDUCED. DUE TO WHICH MOST OF THE LIVER FAILS AND CAN BE LIFE THREATENING.



AYUR GYNAE CARE 1

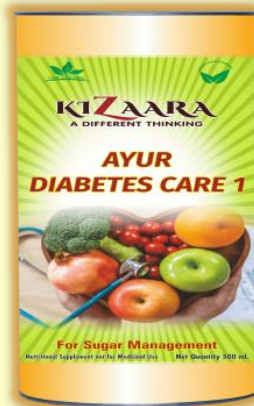
AYUR GYNAE CARE 1 IS VERY HELPFUL FOR WOMEN IN BLOOD PURIFICATION, WEAKNESS AND MENSTRUATION TIME. **AYUR GYNAE CARE 1** INCREASES ENERGY AND STRENGTH IN WOMEN. **AYUR GYNAE CARE 1** TREATS HORMONAL DISORDERS IN WOMEN. REGULATES MENSTRUATION NATURALLY. **AYUR GYNAE CARE 1** PROVIDES ESSENTIAL NUTRITION TO WOMEN FOR THE NATURAL GROWTH OF THE BODY.

AYUR ALLERGY CARE 1



AYUR ALLERGY CARE 1 WITH THE USE OF WE CAN CURE ALL TYPES OF ALLERGIC DISEASES. LIKE ALLERGIC DISEASES ARE CONDITIONS CAUSED BY HYPERSENSITIVITY OF THE IMMUNE SYSTEM. AND THESE DISEASES INCLUDE FEVER, FOOD ALLERGIES, ATOPIC DERMATITIS (A CONDITION THAT MAKES YOUR SKIN RED THAT IS VERY ITCHY), ALLERGIC ASTHMA, AND ANAPHYLAXIS. SYMPTOMS INCLUDE RED EYES, ITCHY RASH, SNEEZING, RUNNY NOSE, SHORTNESS OF BREATH OR SWELLING.

AYUR DIABETES CARE 1



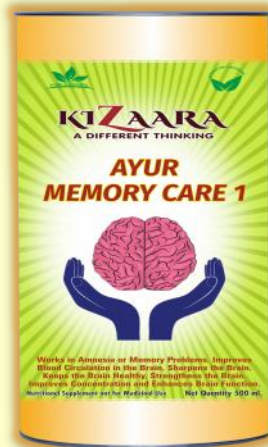
AYUR DIABETES CARE 1 DUE TO OUR DETERIORATING LIFESTYLE OUR BODY HAS BECOME HOME TO MANY DISEASES. ONE OF THESE DISEASES IS DIABETES. ONCE UPON A TIME, THIS DISEASE USED TO HAPPEN ONLY TO PEOPLE ABOVE 50 YEARS OF AGE. BUT TODAY EVERYONE IS SUFFERING FROM IT. DIABETES CAN BE CURED BY USING **AYUR DIABETES CARE 1**. DIABETES IS ONE SUCH CONDITION. WHICH IMPAIRS THE BODY'S ABILITY TO INCREASE BLOOD SUGAR EXCESSIVELY. WHICH IS KNOWN AS BLOOD SUGAR. THE RESULT OF **AYUR DIABETES CARE 1** IS VERY GOOD. THROUGH **AYUR DIABETES CARE 1**, PEOPLE UP TO 570 SUGAR LEVEL HAVE BEEN CURED. AND MANY PEOPLE HAVE STOPPED TAKING INSULIN.

AYUR KIDS CARE 1



AYUR KIDS CARE 1 CURES ALL THE COMMON PROBLEMS OF CHILDREN LIKE:-LOSS OF APPETITE, IRRITABILITY, EXCESSIVE CRYING, LACK OF INTEREST IN READING ETC. AND THE IMMUNITY OF THE CHILD DEPENDS ON MANY THINGS LIKE GROWTH, WEIGHT, HEIGHT, IMPROVEMENT IN MEMORY, HUNGER, LAZINESS, ETC. **AYUR KIDS CARE 1** IS A MEDICINE JUICE FOR COMPLETE GROWTH. **AYUR KIDS CARE 1** GREATLY HELPS THE CHILD IN GOOD DIGESTION, BETTER IMMUNE SYSTEM, IMPROVES MEMORY AND SHARPENS THE MIND. IT ALSO WORKS IN INCREASING HEIGHT AND WEIGHT. AND IT IS VERY TASTY TO DRINK.

AYUR MEMORY CARE 1



AYUR MEMORY CARE 1 HELPS TO CURE FORGETFULNESS OR MEMORY PROBLEM (DEMENTIA), IMPROVE BLOOD CIRCULATION TO THE BRAIN, SHARPEN THE MIND, KEEP THE MIND HEALTHY, STRENGTHEN THE BRAIN, IMPROVE CONCENTRATION **AYUR MEMORY CARE 1** HAS BEEN SHOWN TO WORK VERY WELL IN CORRECTING ALZHEIMER'S DISEASE, IMPROVING BRAIN FUNCTION, AND TREATING OTHER BRAIN PROBLEMS.

AYUR BERRY JUICE 1



AYUR BERRY JUICE 1 IS VERY HELPFUL IN IMPROVING BLOOD SUGAR AND INSULIN RESPONSE. IT IS A GOOD SOURCE OF FIBRE. LOW IN CALORIES AND VERY NUTRITIOUS. ALONG WITH REDUCING THE LEVEL OF CHOLESTEROL, KEEPS THE HEART HEALTHY. REDUCES WRINKLES OF THE SKIN. **AYUR BERRY JUICE 1** CONTAINS SEVERAL ANTI-OXIDANTS, ANTHOCYANINS (A GROUP OF AGLYCONES (SUGAR-FREE MOLECULES) EXTRACTED FROM PLANTS IN RED AND BLUE PIGMENTS) ELLAGIC ACID AND RESVERATROL (BY REDUCING THE PROBLEM OF HIGH CHOLESTEROL (LDL). INCREASES THE LEVEL OF GOOD CHOLESTEROL (HDL). WHICH REDUCE THE RISK OF CANCER. IT IS BENEFICIAL FOR ALMOST ALL DISEASES. SUCH AS:-COLD, OBESITY, LIVER, BLOOD PRESSURE, CHOLESTEROL, SUGAR, HEART DISEASES, RESPIRATORY DISEASES, MENTAL, PHYSICAL AND SEXUAL WEAKNESS. BY DRINKING THIS, A PERSON CAN REMAIN YOUNG FOR MORE THAN 100 YEARS. AND CAN LEAD A HEALTHY LIFE.

AYUR NONI JUICE 1



AYUR NONI JUICE 1 IS USEFUL IN IMPROVING THE IMMUNITY POWER OF THE BODY AGAINST ALL DISEASES. **AYUR NONI JUICE 1** HELPS A LOT IN REGULATING THE BODY'S CELL FUNCTION, PROTECTING IT FROM CONTAMINANTS AND TOXINS. **AYUR NONI JUICE 1** ACTS AS A NATURAL ANTI-OXIDANT AND IMPROVES MEMORY.

AYUR RED ALOEVERA JUICE 1



AYUR RED ALOEVERA JUICE 1 HAS COUNTLESS BENEFITS. LIKE IT HELPS A LOT IN REMOVING THE TOXIC SUBSTANCES OF THE BODY. **AYUR RED ALOEVERA JUICE 1** MAKES THE DIGESTIVE SYSTEM HEALTHY. **AYUR RED ALOEVERA JUICE 1** MAINTAINS LOW BLOOD SUGAR LEVEL. ALONG WITH HYDRATING THE SKIN, IT ALSO TAKES CARE OF THE SKIN. **AYUR RED ALOEVERA JUICE 1** IS VERY USEFUL FOR REDUCING WEIGHT. **AYUR RED ALOEVERA JUICE 1** REDUCES JOINT PAIN AND MAKES BONES STRONG. NORMALIZES BLOOD CIRCULATION. FOR ORAL HEALTH, FOR COLD, FOR CONSTIPATION, FOR FIGHTING DISEASES, FOR DIGESTION, FOR MENTAL HEALTH, FOR INFLAMMATION, **AYUR RED ALOEVERA JUICE 1** IS BENEFICIAL IN ARTHRITIS. AND ALSO LOWERS CHOLESTEROL. AND **AYUR RED ALOEVERA JUICE 1** IS A PANACEA FOR A HEALTHY HEART, FOR DIABETES.

AYUR FAT CARE 1



USING **AYUR FAT CARE 1** WE CAN REMOVE THE EXTRA FAT FROM OUR WHOLE BODY AND IMPROVE OVERALL HEALTH. IN ADDITION TO DIET AND EXERCISE, MANY OTHER FACTORS CAN AFFECT WEIGHT. WHICH CAUSE HORMONAL DISORDERS AND MALFUNCTION OF BODY PARTS AND FUNCTIONS. THOUSANDS OF DISEASES ARISE DUE TO THE INCREASE OF UNNECESSARY FAT IN OUR BODY. **AYUR FAT CARE 1** WORKS VERY WELL IN REMOVING EXCESS FAT FROM THE WHOLE BODY.

AYUR SEA BUCKTHORN JUICE 1



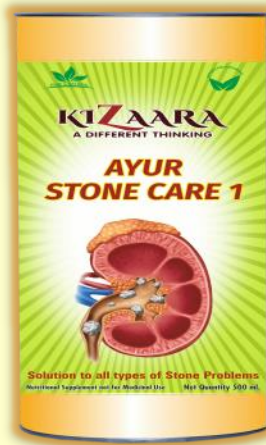
AYUR SEA BUCKTHORN JUICE 1 IS NATURALLY LOADED WITH ANTI-OXIDANTS. WHICH HELPS A LOT IN PROTECTING YOUR BODY FROM DISEASES LIKE AGING, CANCER, HEART DISEASE. ITS ANTI-OXIDANTS HELP IN REDUCING THE RISK FACTORS OF HEART DISEASE. INCLUDING BLOOD CLOTTING, BLOOD PRESSURE AND BLOOD CHOLESTEROL LEVELS. **AYUR SEA BUCKTHORN JUICE 1** HELPS IN LOWERING BLOOD SUGAR LEVELS BY INCREASING INSULIN SECRETION AND INSULIN SENSITIVITY. IT HELPS IN GOOD GROWTH OF THE SKIN. HELPS WOUNDS HEAL FASTER. IT CONTAINS HEALTHY FATS, VITAMIN-E AND CAROTENOIDS. WHICH PROTECTS ALL THE CELLS OF THE LIVER FROM DAMAGE. **AYUR SEA BUCKTHORN JUICE 1** HELPS IN KILLING CANCER CELLS. AND IT HELPS PREVENT AND TREAT STOMACH ULCERS. **AYUR SEA BUCKTHORN JUICE 1** HELPS IN REDUCING INFLAMMATION. AND ALSO REDUCES THE SYMPTOMS OF DEPRESSION.

AYUR TRIPHALA JUICE 1



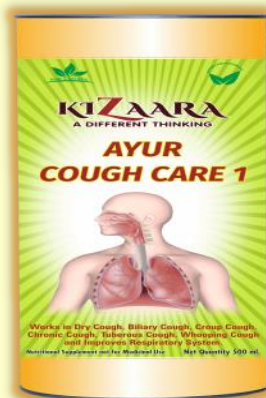
AYUR TRIPHALA JUICE 1 TO CURE GAS OR CONSTIPATION, TO IMPROVE DIGESTION, TO STRENGTHEN THE IMMUNE SYSTEM, TO CORRECT DIABETES, TO STRENGTHEN MEDA (STOMACH), TO INCREASE APPETITE, TO DOSHAS OF PITTA. **AYUR TRIPHALA JUICE 1** WORKS VERY WELL IN CURING HEADACHE, IN MAKING EYES AND MIND HEALTHY AND STRONG, IN CURING PILES, ACIDITY AND STOMACH IRRITATION PROBLEM.

AYUR STONE CARE 1



AYUR STONE CARE 1 IS VERY HELPFUL IN TREATING KIDNEY DISEASES LIKE KIDNEY STONES AND UNBEARABLE PAIN CAUSED BY STONES. GALLSTONES ARE A COMMON PROBLEM. WHICH IS OFTEN DUE TO WRONG EATING HABITS, DRINKING LESS WATER THAN NECESSARY. DUE TO THIS PROBLEM, SMALL STONES LIKE HARD STONES ARE FORMED INSIDE. KIDNEY STONE IS A PAINFUL DISEASE. IN WHICH THE PATIENT FEELS SUDDEN PAIN. AND WHEN THE STONE COMES IN THE URINARY TRACT. THEN THE PATIENT FEELS SEVERE PAIN. THIS PAIN WAS UNBEARABLE. SYMPTOMS INCLUDE VOMITING, INTERMITTENT URINATION, BLOOD IN THE URINE, SEVERE PAIN IN THE URINARY TRACT, ETC.

AYUR COUGH CARE 1



AYUR COUGH CARE 1 IS A VERY BENEFICIAL MEDICINE FOR PHLEGM AND COUGH. THROAT MUCUS IS ALSO KNOWN AS PHLEGM. WHEN MUCUS ACCUMULATES IN THE BACK OF YOUR THROAT OR NOSE. SO IT FEELS VERY INCONVENIENT. EXCESSIVE AMOUNT OF MUCUS OR PHLEGM BECOMES A PROBLEM CAUSING COUGH. COUGH HURTS A LOT. AND COUGH CREATES A LOT OF DISCOMFORT IN YOUR LIFE. DUE TO THIS, THERE MAY BE A PROBLEM LIKE FEELING RESTLESS FOR HOURS, REPEATEDLY CLEARING THE THROAT. THERE ARE MANY TYPES OF COUGH. SUCH AS:- DRY COUGH, BILIARY COUGH, CROUP COUGH, CHRONIC COUGH, TUBEROUS COUGH, WHOOP COUGH OR WHOOPING COUGH. **AYUR COUGH CARE 1** IS VERY BENEFICIAL MEDICINE FOR ALL THESE TYPES OF COUGH.

AYUR PILES CARE 1



AYUR PILES CARE 1 PROVIDES RELIEF FROM A PAINFUL DISEASE CALLED PILES. PILES IS A VERY COMMON DISEASE. IN WHICH THE VEINS OF BLOOD SWELL INSIDE THE PERSON'S MALHAR. IT TAKES A LOT OF PAIN TO PASS STOOL. PILES TREATMENT IS POSSIBLE WITH AYURVEDA. PILES ITS MEDICAL NAME IS HEMORRHOID. DUE TO PILES DISEASE, ITS PAIN IS VERY UNBEARABLE. NOWADAYS, THE DISEASE OF PILES IS SEEN IN MANY PEOPLE. IF SEEN, THE DISEASE OF PILES IS ESPECIALLY DUE TO CHANGING ROUTINE AND EATING HABITS. IF PILES DISEASE IS NOT TREATED ON TIME THEN IT CAN BE VERY PAINFUL. WHICH CAN TAKE THE FORM OF BLOODY PILES. THERE ARE TWO TYPES OF PILES-EXTERNAL AND INTERNAL PILES. IN EXTERNAL PILES THERE IS SWELLING OUTSIDE THE PULP. AND IN INTERNAL PILES THERE IS SWELLING IN THE VEINS AROUND THE RECTUM. IF YOU ARE ALSO SUFFERING FROM THIS DISEASE. SO YOU CAN GET RID OF PILES FOREVER BY USING **AYUR PILES CARE 1**.

AYUR FENNEL DROP 1



AYUR FENNEL DROP 1 IS USED FOR VARIOUS DIGESTIVE PROBLEMS INCLUDING HEARTBURN, INTESTINAL GAS, BLOATING, LOSS OF APPETITE. **AYUR FENNEL DROP 1** GREATLY IMPROVES DIGESTION. AND IT ALSO GREATLY IMPROVES LIVER FUNCTION. **AYUR FENNEL DROP 1** MAKES THE LUNGS HEALTHY. AND ALSO HELPS A LOT IN MAKING THE RESPIRATORY SYSTEM HEALTHY.

AYUR THYROID CARE 1



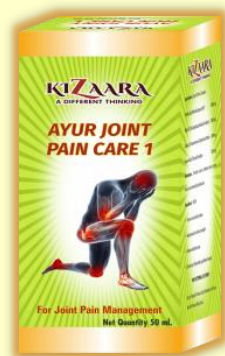
AYUR THYROID CARE 1 IS A VERY BENEFICIAL MEDICINE FOR THYROID. THYROID IS A TYPE OF GLAND. WHICH IS EXACTLY IN THE FRONT OF THE NECK. THIS GLAND IS BUTTERFLY SHAPED. THIS GLAND CONTROLS THE METABOLISM OF YOUR BODY. THAT IS, THE FOOD WE EAT. IT WORKS TO CONVERT IT INTO ENERGY. APART FROM THIS, IT ALSO AFFECTS YOUR HEART, MUSCLES, BONES AND CHOLESTEROL. THYROID IS ALSO CALLED SILENT KILLER. BECAUSE ITS SYMPTOMS DO NOT APPEAR TOGETHER. THE INCREASE OF THYROID ALSO HAS A BAD EFFECT ON OUR HEART AND BONES OF OUR BODY. THE FUNCTION OF THYROID ENCOURAGES OTHER ORGANS OF OUR BODY TO FUNCTION PROPERLY. WOMEN ARE MOST VULNERABLE TO THYROID DISEASE. THIS DISEASE OCCURS DUE TO THE ENLARGEMENT OF THE THYROID GLAND. WHICH CONTROLS MANY IMPORTANT ACTIVITIES OF THE BODY. FROM WHICH THYROXINE T₄, TRIDOTHYRONINE T₃ HORMONES ARE SECRETED. THESE HORMONES CONTROL THE ENERGY OF THE BODY AND HELP IN IMPORTANT ACTIVITIES LIKE BLOOD CIRCULATION, BREATHING AND DIGESTION. DUE TO A MALFUNCTION IN THIS GLAND, THE WHOLE SYSTEM OF THE BODY GETS DISTURBED. DUE TO THYROID, PEOPLE'S WEIGHT STARTS INCREASING RAPIDLY. HORMONES IN THE THYROID ARE MADE IN EXCESS OR IN TOO LITTLE QUANTITY. THEN ALONG WITH THYROID, OTHER DISEASES ALSO HAVE TO BE FOUGHT.

AYUR PANCH TULSI 1



AYUR PANCH TULSI 1 HAS THE POWER TO FIGHT EVERY INFECTION. OUR **AYUR PANCH TULSI 1**, IS USEFUL IN MORE THAN 200 DISEASES. **AYUR PANCH TULSI 1** DRINKING WATER REDUCES HARMFUL MICROBES. IT IS USED FOR COUGH, COLD, CHRONIC BACTERIAL DISEASE, SKIN DISEASE, VENEREAL DISEASE, IRREGULAR PERIODS, DIARRHOEA, BAD BREATH, GLOWING FACE, FEVER, SWINE FLU, DENGUE, OBESITY, BLOOD PRESSURE, SUGAR, ALLERGIES, EYE PAIN, AND IN THE MANAGEMENT OF ITCHING, HEART BLOCKAGE, INDIGESTION OUR **AYUR PANCH TULSI 1** HAS THE ABILITY TO FIGHT CANCER AS WELL AS CORONA VIRUS.

AYUR JOINT PAIN CARE 1



AYUR JOINT PAIN CARE 1 REDUCES PAIN AND SWELLING. **AYUR JOINT PAIN CARE 1** RELIEVES MUSCLE SPASM AND STIFFNESS OF JOINTS. **AYUR JOINT PAIN CARE 1** STRENGTHENS THE JOINT STRUCTURE. **AYUR JOINT PAIN CARE 1** OIL IS PURELY BASED ON SAFE AND HARMLESS AYURVEDIC PRINCIPLES. AND THE ACTIVE INGREDIENTS GREATLY HELP IN REDUCING BLOOD CIRCULATION, STIFF MUSCLE AND LIMB PAIN, BODY ACHES, SEVERE JOINT PAIN OR SWELLING. **AYUR JOINT PAIN CARE 1** PROVIDES GREAT RELIEF IN CHRONIC PAIN CONDITIONS. **AYUR JOINT PAIN CARE 1** ALSO GIVES RELIEF IN PAIN WITHOUT ANY SIDE EFFECTS. AND ITS EFFECT IS QUICK IN RELIEVING PAIN.

AYUR HERBAL TEA 1



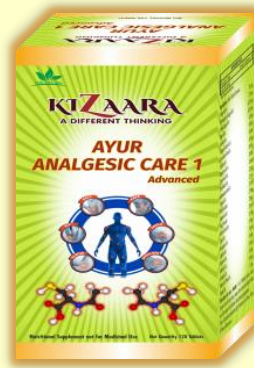
AYUR HERBAL TEA 1 ACCORDING TO INDIAN AYURVEDA, HERBAL TEA IS KNOWN AS VEDIC TEA. **AYUR HERBAL TEA 1** IS VERY TASTY AND FULL OF MEDICINAL PROPERTIES. THE NUTRIENTS FOUND IN IT NOT ONLY REPLENISH THE FLUIDS IN THE BODY. THIS SPECIAL TYPE OF HERBAL TEA IS PREPARED FROM FLOWERS, LEAVES, ROOTS AND SEEDS ETC. **AYUR HERBAL TEA 1** IMPROVES DIGESTION, INCREASES BODY ENERGY, RELIEVES CONSTIPATION, REDUCES INDIGESTION, REFRESHES MENTAL AND PHYSICAL, STRENGTHENS IMMUNE SYSTEM, REDUCES PAIN, FIGHTS CANCER, HEART IT IS VERY BENEFICIAL IN DISEASES, IN ARTHRITIS, IN INSOMNIA, IN DIABETES, IN CONTROLLING BLOOD PRESSURE, IN MAKING THE LIVER HEALTHY, IN PREVENTING CHRONIC DISEASES, IN REDUCING WEIGHT AND REDUCING OBESITY. ALONG WITH HAVING ANTI-OXIDANT PROPERTIES, SOME SUCH ELEMENTS ARE IN **AYUR HERBAL TEA 1** FOUND WHICH CORRECTS THE PROCESS OF METABOLISM TO BURN CALORIES AND REDUCE WEIGHT.

AYUR FLAXSEED OMEGA 369



AYUR FLAXSEED OMEGA-369 HELPS TO MAINTAIN HEART HEALTH, IMPROVE BLOOD CIRCULATION, STRENGTHEN BONES AND JOINTS, REDUCE INFLAMMATION, REDUCE WEIGHT, REDUCE CHOLESTEROL LEVELS, IN MAINTAINING HORMONAL BALANCE, IN STRENGTHENING THE NERVOUS SYSTEM, IN IMPROVING CONCENTRATION, IN IMPROVING MOOD, IN BOOSTING THE IMMUNE SYSTEM, IT IS VERY BENEFICIAL FOR HAIR, NAILS, SKIN AND EYES.

AYUR ANALGESIC CARE 1 (ADVANCED)



AYUR ANALGESIC CARE 1 IS A VERY BENEFICIAL MEDICINE FOR ALL OVER BODY PAIN. **AYUR ANALGESIC CARE 1** NAUSEA, JOINT PAIN, STIFFNESS OF THE JOINTS, CREPITUS (SOUND COMING FROM THE JOINTS), FROZEN SHOULDER, SHOULDER AND BODY PAIN, ELBOW PAIN AND SPRAIN PAIN, NECK PAIN (CERVICAL), ARTHRITIS PAIN, MUSCLE ACHES, ITCHY EARS, EAR INFECTIONS AND SEVERE BURNING EAR PAIN, PRICKLING AND SWELLING OF THE FACE, RASH ON THE FACE, LEG PAIN BELOW THE WAIST (SCIATICA), PAIN IN CALVES, TOES AND THUMBS INFLAMMATION OF THE BODY, SKIN DISEASES, SWELLING OF THE BODY AND HEALING OF WOUNDS AND WOUNDS ON THE BODY, HIGH BLOOD PRESSURE, TO REMOVE WEAKNESS OR INFIRMITY OF THE BODY AND INCREASE PHYSICAL CAPACITY, TUBERCULOSIS, MOUTH ULCERS, STOMACH WORMS, STOMACH RELATED PROBLEMS (EG:- STOMACH PAIN, ACIDITY ETC.), LOSS OF APPETITE, INDIGESTION OF FOOD, KIDNEY DISEASE, STONE PROBLEM, DIABETES, FILARIASIS, GAS PROBLEM, LIVER PROBLEM, CARDIOVASCULAR DISEASE, HEADACHE, MIGRAINE, SORE THROAT, RHEUMATISM FOR (RHEUMATOID ARTHRITIS), INFLAMMATION OF THE LUNGS, IT IS VERY HELPFUL IN OPENING THE CLOGGED VEINS, PROTECTING THE BODY FROM GERMS AND IMPROVING IRREGULAR MENSTRUATION.

AYUR NARCOTIC CARE 1



AYUR NARCOTIC CARE 1 PROVIDES LONG TERM RELIEF FROM ADDICTION TO ANY HARMFUL SUBSTANCE LIKE ALCOHOL, TOBACCO. **AYUR NARCOTIC CARE 1** GREATLY HELPS IN BALANCING THE EMOTIONAL, MENTAL AND PSYCHOLOGICAL REACTIONS OF HUMAN BEINGS. **AYUR NARCOTIC CARE 1** INCREASES ENERGY, STAMINA AND CALMS THE MIND.

AYUR DERMO CARE 1



AYUR DERMOCARE 1 HELPS IN HEALING DRY SKIN, SKIN CARE, NOURISHMENT AND HEALING OF SKIN, HEALTHY FEET SKIN, HEALING CRACKED HEELS, WOUNDS AND UNBEARABLE DUE TO CRACKED HEELS **AYUR DERMOCARE 1** WORKS VERY WELL IN CURING PAIN.

AYUR HAIR CARE 1



AYUR HAIRCARE 1 STOP HAIR FALL, HAIR CONDITIONING, USEFUL FOR MASSAGE, HAIR NOURISHMENT, USE FOR SPLIT ENDS, **AYUR HAIRCARE 1** IS VERY BENEFICIAL FOR HAIR GROWTH. TS USE STRENGTHENS THE HAIR ROOTS. AND THE HAIR GETS LONGER. HAIR FALL IS LESS. AND NEW HAIR ALSO STARTS COMING OUT. **AYUR HAIRCARE 1** PREVENTS PREMATURE GRAYING OF HAIR. BENEFICIAL FOR BALDNESS AND GRAY HAIR. AND MAKES HAIR SHINY AND SOFT.

AYUR S + C HAIR CARE 1



AYUR S + C HAIRCARE 1 FOR MAKING HAIR SHINY, PREVENT HAIR FALL, STRENGTHEN HAIR, MAKE HAIR BLACK, SOFT AND SOFT, PREVENT DANDRUFF ETC. **AYUR S + C HAIRCARE 1** WORKS GREAT .

AYUR FACE WASH 1



AYUR FACE WASH 1 FACIAL SHINING, FACIAL BEAUTIFICATION, ACNE REMOVAL, NOURISHING FACIAL SKIN, PROTECTING FACE FROM BACTERIAL INFECTIONS, REMOVING DEAD CELLS OF FACIAL SKIN, FACIAL BUT IN CLEANING THE DIRT ON THE UPPER SURFACE OF THE SKIN, CORRECTING THE SWELLING AND DRYNESS OF THE SKIN ON THE FACE, REMOVING THE DARK SPOTS (BLACK HEADS) ON THE SKIN OF THE FACE, REDUCING THE FACIAL WRINKLES AND **AYUR FACE WASH 1** WORKS VERY WELL IN REMOVING ALL THE SKIN RELATED PROBLEMS.

AYUR SKIN CARE 1



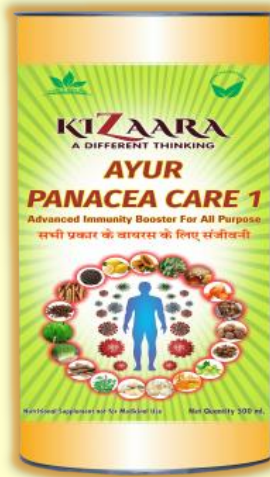
AYUR SKIN CARE 1 TO IMPROVE THE SKIN, MAKE THE SKIN YOUNG AND BEAUTIFUL, MAKE THE SKIN SOFT AND GLOWING, REMOVE DRYNESS OF THE SKIN, PROTECT THE SKIN FROM BACTERIAL INFECTIONS, GLOW ON THE FACE, NOURISHING THE SKIN CELLS AND **AYUR SKIN CARE 1** DOES A GREAT JOB IN BRINGING RETAINING THE MOISTURE OF THE SKIN.

AYUR DENTAL CARE 1



AYUR DENTAL CARE 1 HELPS TO STRENGTHEN LOOSE TEETH, STOP BLEEDING GUMS, FIGHT GERMS, CURES TOOTHACHE, PREVENTS GUM INFECTION, PROTECTS AGAINST CAVITY BACTERIA, PIS (PUS) CURES EXUDATION, MOUTH ULCERS, RED SPOTS ON LIPS, TONGUE OR GUMS ETC., CORRECTS HALITOSIS, **AYUR DENTAL CARE 1** WORKS VERY WELL IN CURING PYORRHEA.

AYUR PANACEA CARE 1



AYUR PANACEA CARE 1 PANACEA MEANS:- PANACEA MEDICINE, SARVA ROG HARAN MEDICINE (A MEDICINE TO CURE ALL DISEASES), DUKH HARAN MEDICINE (A MEDICINE TO REMOVE SORROW), IN A WAY, SANJEEVANI MEANS A MEDICINE THAT REVIVES US. OUR **AYUR PANACEA CARE 1** WORKS LIKE A SANJEEVANI FOR MANY DISEASES WHICH ARE ARISING DUE TO THE FAST CHANGING WEATHER OF TODAY. IN INCREASING IMMUNITY AND PLATELET COUNT, REMOVING BODY FATIGUE, INCREASING BODY STRENGTH, CURING ITCHING AND ALLERGIES, CURING JAUNDICE, DIGESTIVE DISEASES, PITTA DOSHA AND CURING CONSTIPATION, APPETITE IN INCREASING, IN CURING THE PROBLEM OF GASTRIC ULCER AND GASTRITIS, BY CURING BAD BREATH, RESPIRATORY DISEASES, IN STRENGTHENING THE RESPIRATORY SYSTEM, IN IMPROVING THE FUNCTIONING OF THE LUNGS, IN RELIEVING STRESS, ANXIETY AND MENTAL PROBLEMS, MAKES EYES AND MIND HEALTHY AND STRONG, LOWERS BAD CHOLESTEROL (LDL) LEVELS, INCREASES GOOD CHOLESTEROL (HDL) LEVELS, IMPROVES BODY'S METABOLIC PROCESS, TREATS MOUTH ULCERS, LIVER INFLAMMATION IN REDUCING OBESITY, IN BEAUTIFYING, IN CURING BURNING SENSATION IN BODY PARTS, IN CURING COLD, COUGH AND PHLEGM, IN CURING TYPHOID, MALARIA AND OTHER FEVERS, IN CORRECTING NASAL DISEASES, REMOVES TOXINS FROM THE BODY, HELPS IN BLACKENING OF HAIR AND GROWTH OF HAIR, IN CURING SKIN DISEASES, IN BRINGING GLOW ON THE FACE, STOMACH IN PREVENTING THE GROWTH OF CANCER AND CANCER CELLS, IN REMOVING THE PROBLEM OF BLOOD CIRCULATION AND HIGH BP, IN REMOVING THE PROBLEM OF BLOOD DISORDERS AND BLOOD CLOTS IN THE BODY, IN CONTROLLING DIABETES, PROBLEMS RELATED TO HEART TO CURE, ELIMINATE STOMACH WORMS, COLIC, BACK PAIN, HEADACHE, MIGRAINE PAIN, NECK PAIN, KNEE PAIN, ARM PAIN, LEG PAIN, INJURY PAIN, MUSCLE AND TO CURE JOINT PAIN, RIB MOVEMENT, REDUCE PAIN AND SWELLING OF THYROID PROBLEM AND ARTHRITIS, CURE CHRONIC BACTERIAL DISEASE, PROTECT AGAINST VIRAL INFECTION AS WELL AS **AYUR PANACEA CARE 1** IT ALSO WORKS VERY WELL IN PROTECTING FROM VIRUS AND FROM CORONA VIRUS.

KIZAARA PRODUCT LIST

PRODUCT NAME	QTY	MRP	DP	BV
1. AYUR IMMUNITY CARE 1	500 ML	1090/-	834/-	447
2. AYUR PANACEA CARE 1	500 ML	1000/-	829/-	393
3. AYUR ORTHO CARE 1	500 ML	1090/-	910/-	505
4. AYUR CARDIO CARE 1	500 ML	1180/-	919/-	478
5. AYUR ENERGY CARE 1	500 ML	2224/-	1878/-	1094
6. AYUR ALLERGY CARE 1	500 ML	1220/-	1046/-	667
7. AYUR GYNAE CARE 1	500 ML	1400/-	1217/-	665
8. AYUR DIABETES CARE 1	500 ML	910/-	632/-	361
9. AYUR LIVER CARE 1	500 ML	1473/-	1239/-	735
10. AYUR BERRY JUICE 1	500 ML	1180/-	839/-	401
11. AYUR RED ALOEVERA JUICE 1	500 ML	950/-	749/-	410
12. AYUR SEA BUCKTHORN JUICE 1	500 ML	1252/-	1054/-	545
13. AYUR FAT CARE 1	500 ML	1180/-	996/-	555
14. AYUR STONE CARE 1	500 ML	1239/-	1010/-	505
15. AYUR NONI CARE 1	500 ML	1140/-	969/-	523
16. AYUR PILES CARE 1	500 ML	1180/-	1019/-	528
17. AYUR PANCH TULSI 1	25 ML	370/-	325/-	208

KIZAARA PRODUCT LIST

PRODUCT NAME	QTY	MRP	DP	BV
18. AYUR JOINT PAIN CARE 1	50 ML	370/-	321/-	171
19. AYUR KIDS CARE 1	500 ML	1400/-	1235/-	581
20. AYUR NARCOTIC CARE 1	25 ML	424/-	366/-	190
21. AYUR FENNEL DROPS 1	50 ML	320/-	194/-	68
22. AYUR HAIR CARE 1	100 ML	226/-	199/-	60
23. AYUR HERBAL TEA 1	100 GM	415/-	366/-	150
24. AYUR FLAXSEED OMEGA - 369	60 CAP.	1499/-	1275/-	811
25. AYUR ANALGESIC CARE 1	120 TAB.	1499/-	1221/-	640
26. AYUR THYROID CARE 1	500 ML	1180/-	1019/-	532
27. AYUR COUGH CARE 1	500 ML	1140/-	910/-	451
28. AYUR DERMO CARE 1	50 GM	240/-	217/-	87
29. AYUR MEMORY CARE 1	500 ML	1310/-	1144/-	640
30. AYUR TRIPHALA JUICE 1	500 ML	600/-	416/-	140
31. AYUR S + C HAIR CARE 1	100 GM	240/-	200/-	68
32. AYUR FACE WASH 1	100 GM	235/-	194/-	73
33. AYUR SKIN CARE 1	50 GM	222/-	190/-	64
34. AYUR DENTAL CARE 1	100 GM	240/-	208/-	91

OUR SAGES MONKS USED TO SAY EARLIER

❖ PAHLA SUKH - NIROGI KAYA,
❖ FIRST HAPPINESS - HEALTHY / FIT BODY

❖ DOOSRA SUKH - GHAR ME HO MAYA,
❖ SECOND HAPPINESS - GLAMOUR IN THE HOUSE

❖ TEESRA SUKH - SULAKSHANA NAARI,
❖ THIRD HAPPINESS - AN EMINENT WOMAN

❖ CHAUTHA SUKH - HO PUTRA AAGYAKAARI,
❖ FOURTH HAPPINESS - BE OBEDIENT SON

❖ PAANCHWA SUKH - HO SUNDAR WAAS,
❖ FIFTH HAPPINESS - BEAUTIFUL HABITAT

❖ CHHATHA SUKH - HO ACHCHA PAAS (SUKH, SUVIDHA, MAAN-SAMMAN)
❖ SIXTH HAPPINESS-BE NICE (HAPPINESS, CONVENIENCE,
HONOR-RESPECT)

❖ SAATWAN SUKH - HO MITRA GHANERE.
❖ SEVENTH HAPPINESS - YOU MUST BE GOOD FRIENDS.

THE FIRST HAPPINESS HEALTHY BODY / FIT BODY.

SECOND HAPPINESS GLAMOUR IN THE HOUSE.

WHAT DREAMS DO WE ALL HAVE ..?



GOOD EDUCATION



DREAM CAR



WORLD TOUR



A LOT OF MONEY



DREAM HOUSE WITH FAMILY



INSURANCE COVER

KI ZAARA
A DIFFERENT THINKING



SAVINGS



BE YOUR OWN BOSS



HOW DO WE FULFILL OUR DREAMS..?

KI ZAARA
A DIFFERENT THINKING



! LET'S MAKE IT POSSIBLE TOGETHER WITH US !

! BECAUSE FAITH IS SUCCESS !

KIZARA'S BEST INCENTIVE PLANS

- ❖ **RETAIL PROFIT ON ALL PRODUCTS** (UP TO 05% TO 10%)
- ❖ **SALES MATCHING INCENTIVE** (UP TO 21 LEVEL)
- ❖ **ACHIEVER INCENTIVE** (UP TO 21 LEVEL)
- ❖ **GREAT RECOGNITION** (UP TO 21 LEVEL)
- ❖ **BEST REWARD AND AWARD LIKE:**
NATIONAL AND INTERNATIONAL TOUR, MOBILE, LAPTOP,
TWO-WHEELER, JEWELLERY, CAR, HOUSE,
SPECIAL REWARD HELICOPTER
- ❖ **TRAVEL INCENTIVE** (2% OF THE COMPANY'S TOTAL MONTHLY BV TURNOVER)
- ❖ **BIKE INCENTIVE** (2% OF THE COMPANY'S TOTAL MONTHLY BV TURNOVER)
- ❖ **CAR INCENTIVE** (1.5% OF THE COMPANY'S TOTAL MONTHLY BV TURNOVER)
- ❖ **HOUSE INCENTIVE** (1.5% OF THE COMPANY'S TOTAL MONTHLY BV TURNOVER)
- ❖ **LOYALTY INCENTIVE** (1% OF THE COMPANY'S TOTAL ANNUAL BV TURNOVER)
- ❖ **PERFORMANCE REWARD** (TARGET)



MAXIMUM LIMIT OF SALES MATCHING INCENTIVES ON OWN SALES IS 1,00,000 BV PER WEEK FROM 100 BV TO 2,499 BV, 2,00,000 BV PER WEEK FROM 2,500 BV TO 4,999 BV AND 4,00,000 BV PER WEEK ON BV SALES ABOVE 5,000 BV

! THE BV EARNED BY THE DIRECT SELLER IS CONVERTED INTO RUPEES THROUGH SOFTWARE ! 56

HOW TO BECOME KIZAARA'S DIRECT SELLER ..?

1. REGISTRATION ON THE KIZAARA WEBSITE (WWW.KIZAARA.COM) IS ABSOLUTELY FREE AND THERE IS NO ANNUAL FEE.
2. UPDATE YOUR PROFILE (KYC)
3. AFTER THAT AVAIL ALL THE BENEFITS OF DIRECT SELLER.

KIZAARA
A DIFFERENT THINKING



! A GOOD DEED ALWAYS COMES AROUND !

**“ HELP UNHEALTHY PEOPLE STAY
HEALTHY**

AND IT'S VERY EASY TO DO.

**AND SIMILARLY, TELL THOSE
PEOPLE TO MAKE HEALTHY THE
OTHER UNHEALTHY PEOPLE AND
HELP THEM. ”**

**“ IF YOU DO THIS THEN YOU CAN
EARN WITH 1:1 RATIO,
UNLIMITED DEPTH SALES
MATCHING INCENTIVES & LOTS
OF REWARD AND AWARD. ”**

THREE BENEFITS OF MATCHING SALES WITH A 1:1 RATIO

SALES MATCHING INCENTIVE*

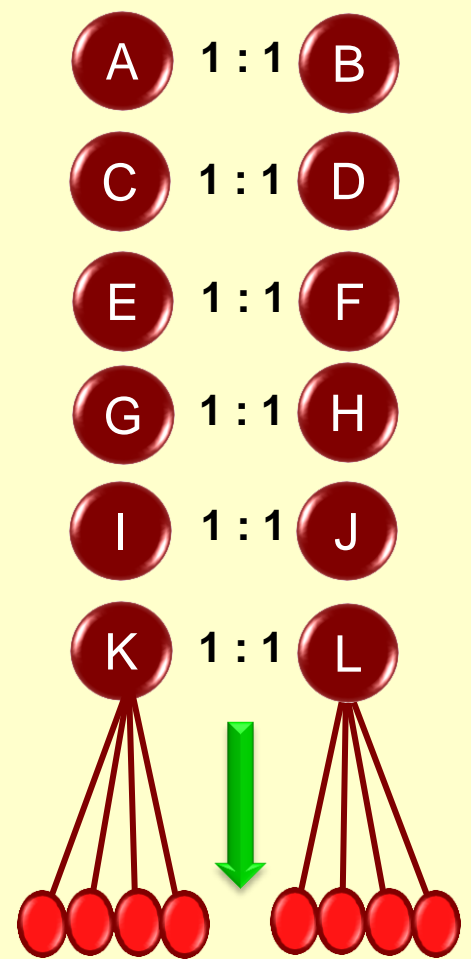
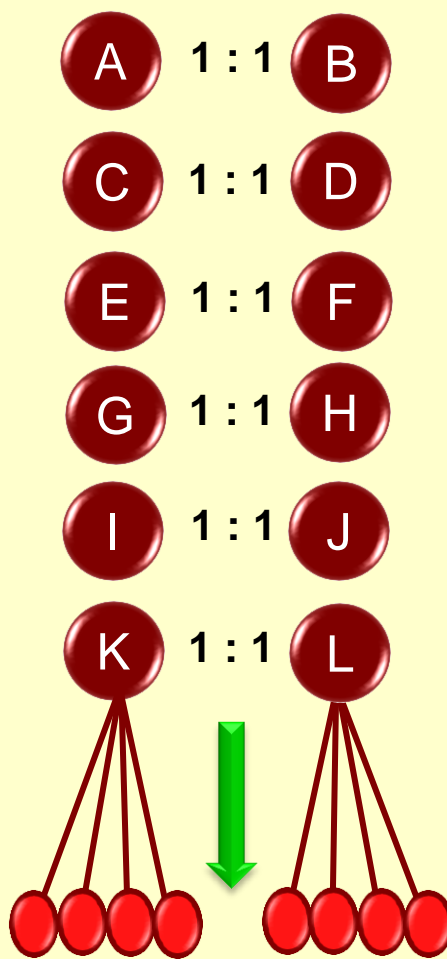
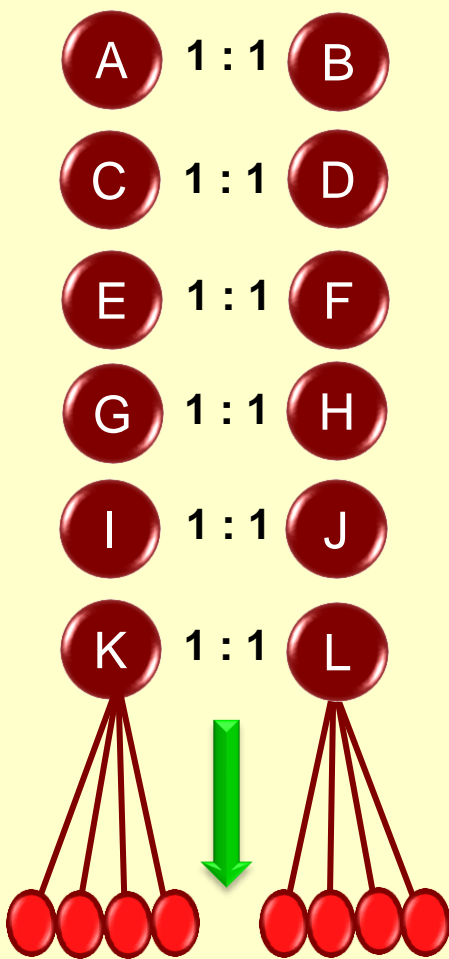
ACHIEVER INCENTIVE*

REWARD AND AWARD*

1st HIGHEST TEAM ■ 2nd HIGHEST TEAM

1st HIGHEST TEAM ■ 2nd HIGHEST TEAM

1st HIGHEST TEAM ■ 2nd HIGHEST TEAM



SALES MATCHING INCENTIVE OF 20% OF SALES MATCHING BV UP TO 11TH RECOGNITION.
 THEN 10% **SALES MATCHING INCENTIVE** OF SALES MATCHING BV FROM 12TH RECOGNITION TO UNLIMITED DEPTH.

2.5% ACHIEVER INCENTIVE SALES MATCHING BV CONTINUES UP TO 21ST RECOGNITION

REWARD AND AWARD CONTINUES UP TO 21ST RECOGNITION

SALES MATCHING INCENTIVE

1st HIGHEST TEAM

1,000 BV

1

1,000 BV

2

6,000 BV

3

6,500 BV

4

8,000 BV

5

FROM THE 1st HIGHEST TEAM = 22,500 BV

PAID SALES MATCHING = 22,500 BV

2nd HIGHEST TEAM

1

2,000 BV

2

6,000 BV

3

2,000 BV

4

5,500 BV

5

8,550 BV

FROM THE 2nd HIGHEST TEAM = 24,050 BV

PAID SALES MATCHING = 22,500 BV

TOTAL PAID SALES MATCHING = 22,500 BV

CARRY FORWARD SALES = 1,550 BV

SALES MATCHING INCENTIVE OF 20% OF SALES MATCHING BV UP TO 11TH RECOGNITION. THEN 10% SALES MATCHING INCENTIVE OF SALES MATCHING BV FROM 12TH RECOGNITION TO UNLIMITED DEPTH.

GREAT RECOGNITIONS BY KIZAARA

1ST QUALIFIER

8TH GOLD STAR

**15TH TRIPLE
DIAMOND**

2ND QSE

9TH PEARL

16TH VENUS

3RD SUPER QSE

10TH TOPAZ

**17TH DOUBLE
VENUS**

4TH LEADERS CLUB

11TH EMERALD

18TH TRIPLE VENUS

5TH SILVER

12TH RUBY

19TH MERCURY

6TH SILVER STAR

13TH DIAMOND

20TH CROWN

7TH GOLD

**14TH DOUBLE
DIAMOND**

**21ST CROWN
AMBASSADOR**

SR. NO., SALES MATCHING (BV), SALES MATCHING INCENTIVE (BV), ACHIEVER INCENTIVE (BV) & REWARD AND AWARD

SR.NO. SALES MATCHING (BV) SALES MATCHING INCENTIVE (BV)* ACHIEVER INCENTIVE (BV)* REWARD AND AWARD*

1	5,000	1,000	+125	+125 BV
2	+10,000	2,000	+250	+250 BV
3	+20,000	4,000	+500	+500 BV
4	+40,000	8,000	+1,000	+1,000 BV
5	+80,000	16,000	+2,000	+2,000 BV
6	+1,60,000	32,000	+4,000	+4,000 BV
7	+3,20,000	64,000	+8,000	



GOA TOUR
GOA 2N & 3D
SELF

KI ZAARA
A DIFFERENT THINKING

SR. NO., SALES MATCHING (BV), SALES MATCHING INCENTIVE (BV), ACHIEVER INCENTIVE (BV) & REWARD AND AWARD

SR.NO. SALES MATCHING (BV) SALES MATCHING INCENTIVE (BV)* ACHIEVER INCENTIVE (BV)* REWARD AND AWARD*

8

+6,40,000

1,28,000

+16,000

+ REWARD AND AWARD*



GOA TOUR
2N & 3D SELF

9

+12,80,000

2,56,000

+32,000

+ REWARD AND AWARD*



NEPAL TOUR
3N & 4D SELF

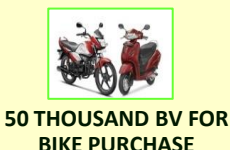
10

+25,60,000

5,12,000

+64,000

+ REWARD AND AWARD*



THAILAND TOUR
3N & 4D SELF

11

+51,20,000

10,24,000

+1,28,000

+ REWARD AND AWARD*



MALAYSIA TOUR
4N & 5D SELF

12

+1,02,40,000

10,24,000

+2,56,000

+ REWARD AND AWARD*



SINGAPORE TOUR
5N & 6D SELF

! THE BV EARNED BY THE DIRECT SELLER IS CONVERTED INTO RUPEES THROUGH SOFTWARE !

SR. NO., SALES MATCHING (BV), SALES MATCHING INCENTIVE (BV), ACHIEVER INCENTIVE (BV) & REWARD AND AWARD

SR.NO. SALES MATCHING (BV) SALES MATCHING INCENTIVE (BV)* ACHIEVER INCENTIVE (BV)* REWARD AND AWARD*

13

+2,04,80,000

20,48,000

+5,12,000

+ REWARD AND AWARD*



ONE HYUNDAI VENUE CAR



SINGAPORE TOUR
5N & 6D SELF

14

+4,09,60,000

40,96,000

+10,24,000

+ REWARD AND AWARD*



UPTO RS. 10 LAKH BV FOR
JEWELLERY PURCHASE



DUBAI TOUR
4N & 5D COUPLE

15

+8,19,20,000

81,92,000

+20,48,000

+ REWARD AND AWARD*



ONE JEEP COMPASS CAR



HONG KONG TOUR
5N & 6D COUPLE

16

+16,38,40,000

1,63,84,000

+40,96,000

+ REWARD AND AWARD*



35 LAKH BV FOR
HOUSE PURCHASE



MALAYSIA TOUR 5N & 6D
COUPLE + 2 CHILDREN

17

+32,76,80,000

3,27,68,000

+81,92,000

+ REWARD AND AWARD*



ONE AUDI A5 CAR



SWITZERLAND TOUR 5N & 6D
COUPLE + 2 CHILDREN

SR. NO., SALES MATCHING (BV), SALES MATCHING INCENTIVE (BV), ACHIEVER INCENTIVE (BV) & REWARD AND AWARD

SR.NO. SALES MATCHING (BV) SALES MATCHING INCENTIVE (BV)* ACHIEVER INCENTIVE (BV)* REWARD AND AWARD*

18 **+65,53,60,000** **6,55,36,000** **+1,63,84,000**

+ REWARD AND AWARD*



ONE JAGUAR XJ CAR



AUSTRALIA TOUR 5N & 6D
COUPLE + 2 CHILDREN

19 **+1,31,07,20,000** **13,10,72,000** **+3,27,68,000**

+ REWARD AND AWARD*



ONE BMW X7 CAR



AUSTRALIA TOUR 5N & 6D
COUPLE + 2 CHILDREN

20 **+2,62,14,40,000** **26,21,44,000** **+6,55,36,000**

+ REWARD AND AWARD*



ONE FERRARI 812 CAR



MUSCAT/FIJI TOUR 5N & 6D
COUPLE + 2 CHILDREN

21 **+5,24,28,80,000** **52,42,88,000** **+13,10,72,000**

+ REWARD AND AWARD*



ONE HELICOPTER



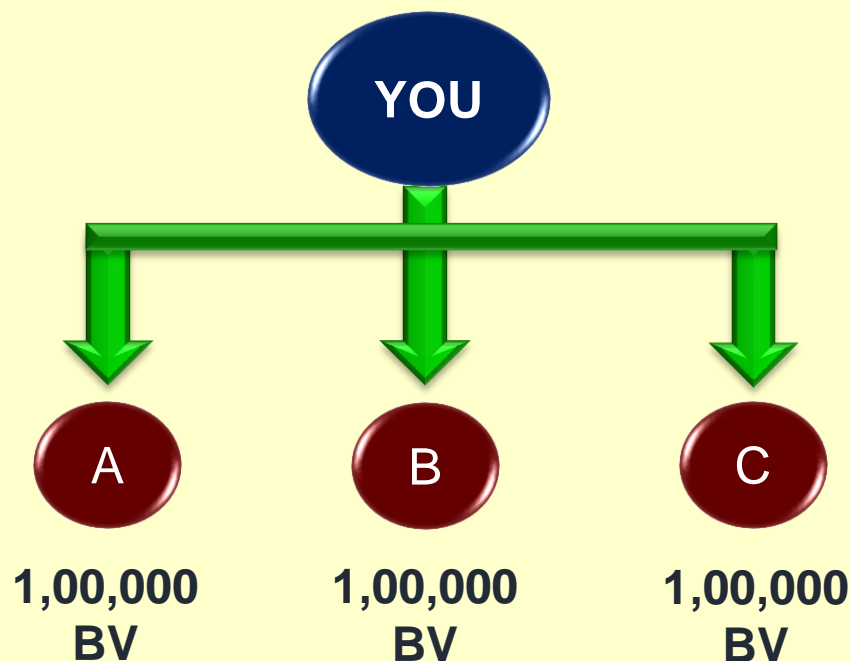
MUSCAT/FIJI TOUR 5N & 6D
COUPLE + 2 CHILDREN

SALES MATCHING INCENTIVE = 1,04,95,99,000/-* + ACHIEVER INCENTIVE = 26,21,43,875/-* + REWARD AND AWARD = 20,62,91,253/-* + TOUR = 20,73,000/-*
APPROXIMATE INCENTIVE TO ONLY ONE DIRECT SELLER = RS. 1,52,01,07,128/-*

TRAVEL INCENTIVE*

{ 2% OF THE TOTAL MONTHLY BV TURNOVER OF THE COMPANY }

KI ZAARA
A DIFFERENT THINKING



IN YOUR TEAM:- AS SOON AS THERE IS A BUSINESS OF 1 - 1 LAKH BV IN EVERY MONTH FROM 3 DIFFERENT TEAMS, THEN YOU GET 2% TRAVEL INCENTIVE OF THE TOTAL BV TURNOVER OF THE COMPANY ACCORDING TO THE FORMULA GIVEN BELOW.

TRAVEL INCENTIVE = 2% OF COMPANY'S MONTHLY BV TURNOVER

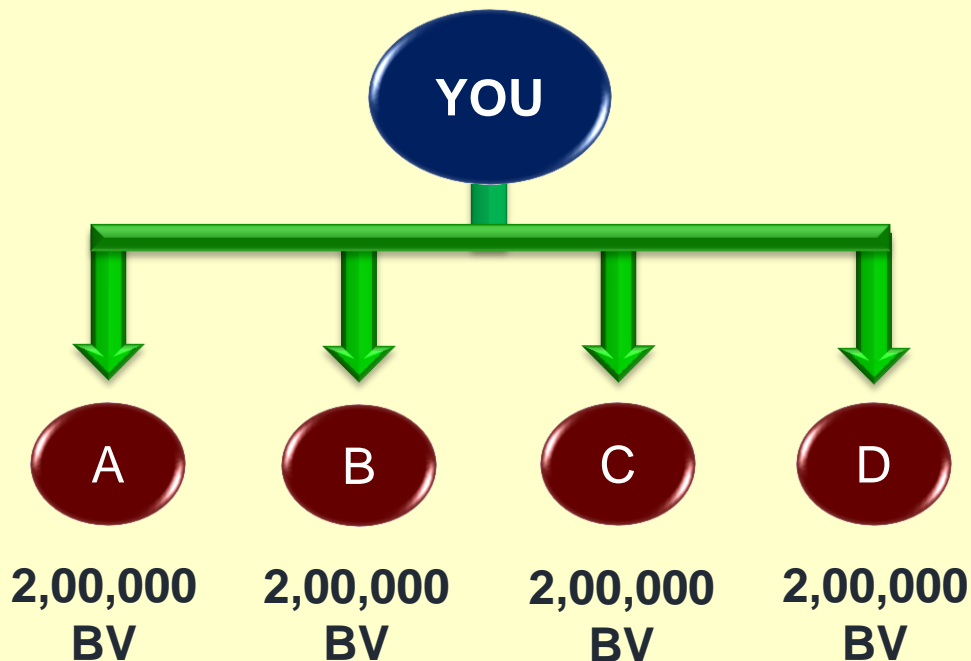
TOTAL NO. OF TRAVEL INCENTIVE ACHIEVERS

YOU CAN EARN UNLIMITED TRAVEL INCENTIVE

BIKE INCENTIVE*

{ 2% OF THE TOTAL MONTHLY BV TURNOVER OF THE COMPANY }

KI ZAARA
A DIFFERENT THINKING



IN YOUR TEAM:- AS SOON AS THERE IS A BUSINESS OF 2 - 2 LAKH BV IN EVERY MONTH FROM 4 DIFFERENT TEAMS, THEN YOU GET 2% BIKE INCENTIVE OF THE TOTAL BV TURNOVER OF THE COMPANY ACCORDING TO THE FORMULA GIVEN BELOW.

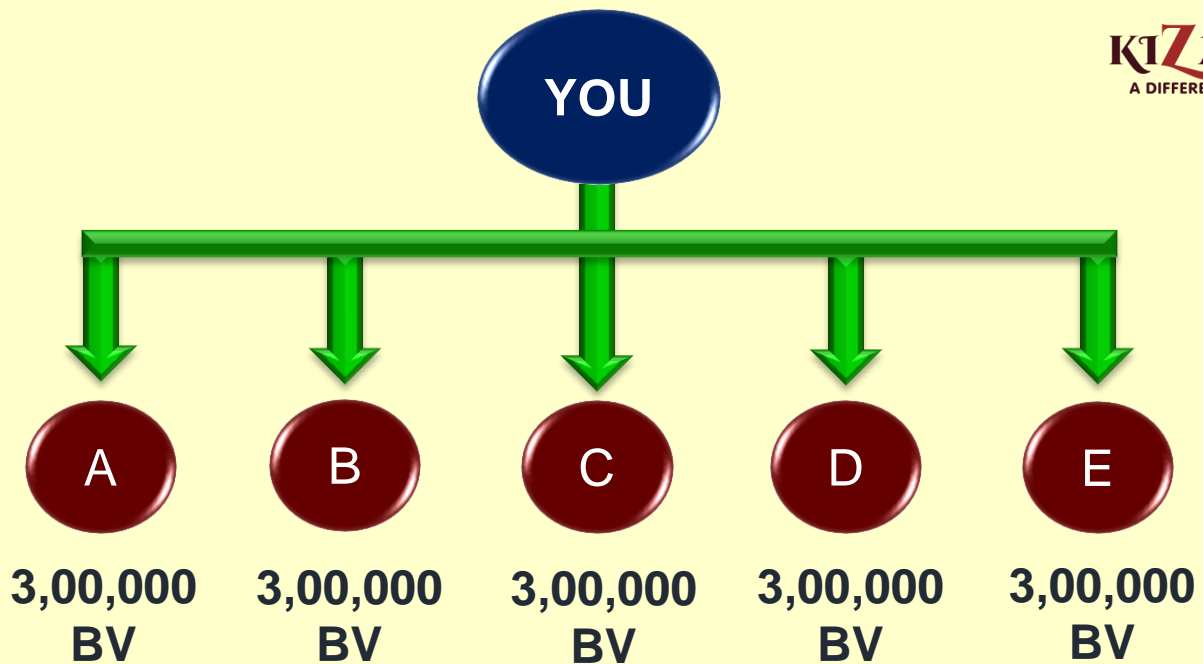
$$\text{BIKE INCENTIVE} = \frac{2\% \text{ OF COMPANY'S MONTHLY BV TURNOVER}}{\text{TOTAL NO. OF BIKE INCENTIVE ACHIEVERS}}$$

YOU CAN EARN UNLIMITED BIKE INCENTIVE

CAR INCENTIVE*

{ 1.5% OF THE TOTAL MONTHLY BV TURNOVER OF THE COMPANY }

KI ZAARA
A DIFFERENT THINKING



IN YOUR TEAM:- AS SOON AS THERE IS A BUSINESS OF 3 - 3 LAKH BV IN EVERY MONTH FROM 5 DIFFERENT TEAMS, THEN YOU GET 1.5% CAR INCENTIVE OF THE TOTAL BV TURNOVER OF THE COMPANY ACCORDING TO THE FORMULA GIVEN BELOW.

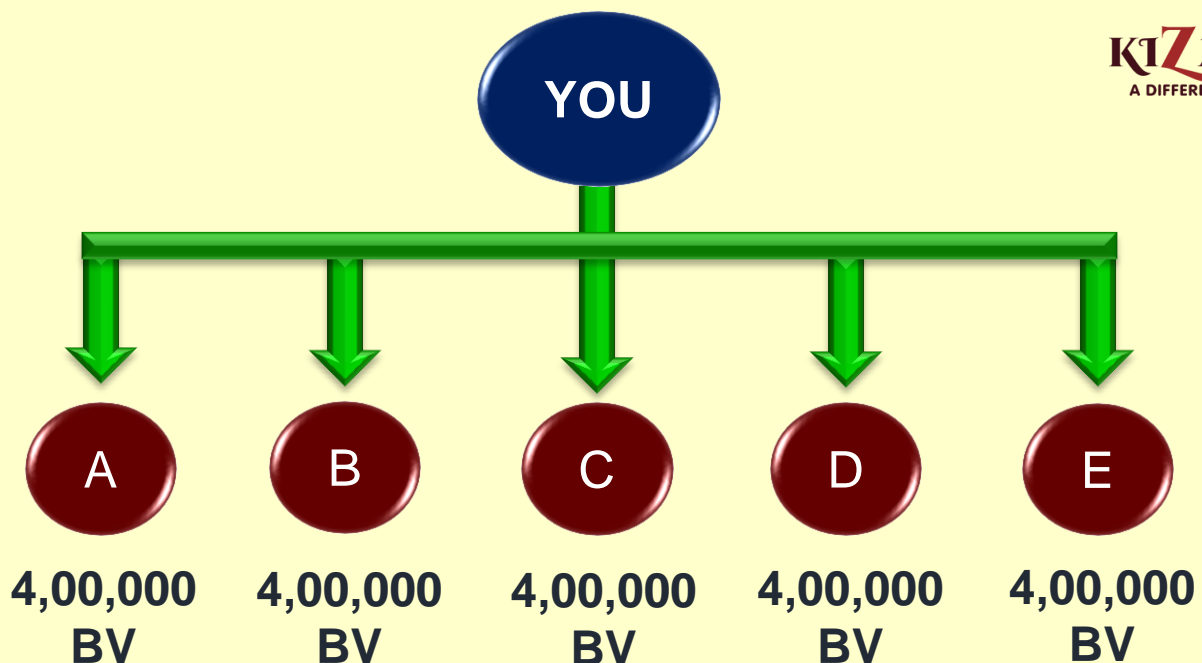
$$\text{CAR INCENTIVE} = \frac{1.5\% \text{ OF COMPANY'S MONTHLY BV TURNOVER}}{\text{TOTAL NO. OF CAR INCENTIVE ACHIEVERS}}$$

YOU CAN EARN UNLIMITED CAR INCENTIVE

HOUSE INCENTIVE*

{ 1.5% OF THE TOTAL MONTHLY BV TURNOVER OF THE COMPANY }

KI ZAARA
A DIFFERENT THINKING



IN YOUR TEAM:- AS SOON AS THERE IS A BUSINESS OF 4 - 4 LAKH BV IN EVERY MONTH FROM 5 DIFFERENT TEAMS, THEN YOU GET 1.5% HOUSE INCENTIVE OF THE TOTAL BV TURNOVER OF THE COMPANY ACCORDING TO THE FORMULA GIVEN BELOW.

HOUSE INCENTIVE = 1.5% OF COMPANY'S MONTHLY BV TURNOVER

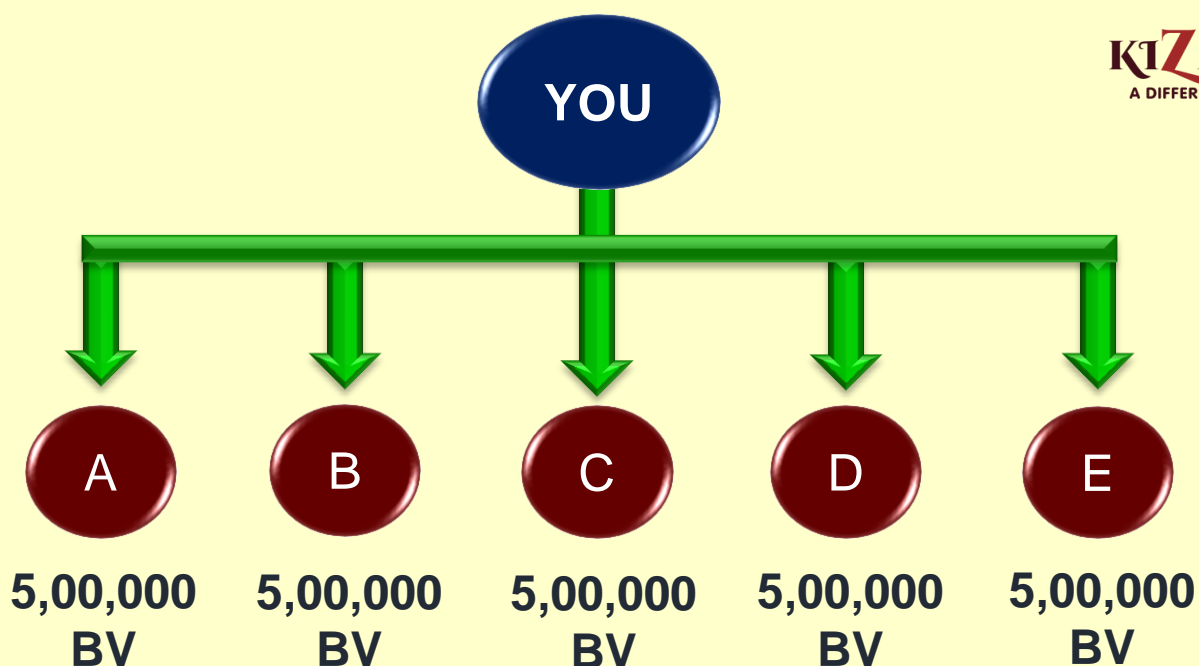
TOTAL NO. OF HOUSE INCENTIVE ACHIEVERS

YOU CAN EARN UNLIMITED HOUSE INCENTIVE

LOYALTY INCENTIVE*

{ 1% OF THE TOTAL BV TURNOVER OF THE COMPANY FOR EACH YEAR (APRIL 1 TO MARCH 31) }

KI ZAARA
A DIFFERENT THINKING



IN YOUR TEAM:- AS SOON AS THERE IS A BUSINESS OF 5 - 5 LAKH BV IN ANY 3 MONTHS OF THE YEAR FROM 5 DIFFERENT TEAMS, THEN YOU GET 1% LOYALTY INCENTIVE OF THE COMPANY'S ANNUAL TOTAL BV TURNOVER ACCORDING TO THE FORMULA GIVEN BELOW.

LOYALTY INCENTIVE = 1% OF COMPANY'S ANNUAL BV TURNOVER

TOTAL NO. OF LOYALTY INCENTIVE ACHIEVERS

YOU CAN EARN UNLIMITED LOYALTY INCENTIVE

! THE BV EARNED BY THE DIRECT SELLER IS CONVERTED INTO RUPEES THROUGH SOFTWARE ! 70



KIZARA

A DIFFERENT THINKING

INTERNATIONAL RETAIL PVT LTD.

HEALTH

AND

SUCCESS

BOTH ARE IN YOUR HANDS



THANK YOU





KIZAARA

A DIFFERENT THINKING

INTERNATIONAL RETAIL PVT LTD.

CONTACT US

WEBSITE :-

WWW.KIZAARA.COM

EMAIL:-

SUPPORT@KIZAARA.COM

CONTACT NO. 9090941010, 9090931010

